



Precision Built Solutions™

MC-B SERIES FANUC 0iMF+ CONTROL MAINTENANCE MANUAL



TABLE OF CONTENTS

1.0 - SAFETY INFORMATION

Safety Information	4
1.01 Mechanical Safety	5
1.02 Electrical Safety	6

2.0 - BASIC INSTALLATION

2.1 WHERE TO PLACE YOUR MACHINE

2.11 Foundation	7
2.12 Environmental Conditions	7
2.2 Unloading Your Machine	7

2.3 RECEIVING YOUR MACHINE

2.4 UNPACK AND PLACE YOUR MACHINE

2.5 PRIOR TO THE ARRIVAL OF THE TECHNICIAN

2.51 Installation Safety Instructions.....	8
2.52 Cleaning & Lubricating Machine.....	8
2.53 Line Voltage Check.....	8
2.54 Electrical Precautions.....	8

2.6 LEVELING THE MACHINE

2.61 Leveling Procedure.....	10
------------------------------	----

3.0 - GENERAL INFORMATION

3.1 MAINTENANCE SCHEDULE CHART

3.2 MACHINE COMPONENTS

3.21 Axis Lubrication System.....	13
3.22 Electrical System.....	13
3.23 Pneumatic System	14
3.24 Automatic Tool Changer	15
3.25 Spindle	16
3.26 Flood Coolant System.....	16
3.27 Optional Tool Probe Calibration.....	17
3.28 Optional Part Probe Calibration	18

3.3 BASIC MACHINE PROCEDURES

3.31 FANUC Machine Reference Procedure after Absolute Encoder Alarm	19
3.32 Check Axis Backlash.....	19
3.33 Adjusting Backlash Compensation.....	20
3.34 Working with Waycovers.....	20
3.35 Check / Adjusting Ballscrew Endplay.....	21
3.36 Check Axis Motor Belts.....	21

4.0 - FANUC CONTROL

4.01 Accessing Machine Parameters.....	22
4.02 Parameter Write Enable + USB	23
4.03 Saving Parameters to USB	23
4.04 Loading Parameters from USB	24
4.05 Fanuc PLC Installation Procedure with USB	24
4.06 Saving Current PLC	24

4.07 Saving the Existing PLC	26
4.08 Loading the New PLC	27
4.09 M-Codes	28
4.10 Alarms	29
4.11 FRYER PLC Alarms and Descriptions	29
4.12 Back-Up A Fanuc Archive File to A USB Stick	29

5.0 – CAROUSEL & ARM STYLE ATC OPERATION

5.1 CAROUSEL STYLE ATC OPERATION	30
5.2 SAFETY RULES -- READ BEFORE OPERATING CAROUSEL ATC	30
5.3 MANUAL OPERATION OF THE CAROUSEL TOOL CHANGER	30
5.4 ARM STYLE ATC OPERATION	30
5.5 SAFETY RULES -- READ BEFORE OPERATING ARM STYLE ATC	30
5.6 MANUAL OPERATION OF THE ARM STYLE TOOL CHANGER	31
5.7 SETTING TOOL CHANGE HEIGHT	31
5.8 RECOVERING FROM A TOOL CHANGE FAILURE	32
5.9 ATC CAROUSEL HOME POSITION AND TOOL BIN# RESET	32
5.10 SPINDLE ORIENT ADJUSTMENT	33
5.11 ARM ALIGNMENT	33
5.12 CONTROL ELEMENT POSITION EXPLANATION DRAWING	34
5.13 SEQUENCE DIAGRAM OF ELECTRIC ACTION	35
5.14 CONTROL CIRCUIT REFERENCE DIAGRAM	36
5.15 MOTOR & SWITCH WIRING DIAGRAM	37
5.16 AIR PRESSURE SWITCH WIRING DIAGRAM	38
5.17 WIRE JUNCTION BOX DRAWING	39
5.18 WIRE BOX DRAWING	40
5.19 MAIN ASSEMBLY DIMENSIONAL DRAWING	41
5.20 DEX-2 TIME CHART	42
5.21 ADJUSTMENT OF ARM	43
5.22 POWER OUTPUT DIRECTION DIAGRAM	44
5.23 ATC GEAR OIL SPECIFICATIONS	45
5.24 ATC REPAIR PROCEDURES	45
5.25 ATC TROUBLESHOOTING	46
5.26 ATC MAINTENANCE	47
5.27 TOOL POT REPLACEMENT PROCEDURE	47
5.28 REPLACE ATC MAGAZINE MOTOR	50
5.29 REPLACE ARM MOTOR	50
5.30 CYLINDER REPLACEMENT	50
5.31 INDUCTION SWITCH REPLACEMENT	50
5.32 REPLACING PROXIMITY SWITCH FOR TOOL MAGAZINE	50
5.33 REPLACING PROXIMITY SWITCH FOR THE ARM	50
5.34 NOTES	50
5.35 ATC MAGAZINE MAINTENANCE POINTS	51

6.0 – DRAWINGS AND PARTS LIST

6.1 FANUC CONTROL ELECTRICAL PANEL LAYOUT	53
---	----

6.2 FANUC FRONT CONSOLE LAYOUT 54
6.3 ELECTRIC ARM TYPE ATC DRAWINGS & PARTS LIST 55
6.4 MC-B Z-AXIS COLUMN ASSEMBLY DRAWING & PARTS LIST 65
6.5 MC-B X-AXIS TABLE ASSEMBLY DRAWING & PARTS LIST 67
6.6 MC-B Y-AXIS BASE ASSEMBLY DRAWING & PARTS LIST 70
6.7 MC-B HEAD ASSEMBLY DRAWING & PARTS LIST 73
6.8 MC-B SERIES SHEETMETAL ASSEMBLY DRAWING & PARTS LIST 76

1.0 SAFETY INFORMATION

READ BEFORE INSTALLING OR OPERATING

NOTE: THIS MACHINE IS AUTOMATICALLY CONTROLLED AND MAY START AT ANY TIME.



All CNC machines contain hazards from rotating parts, belts and pulleys, high voltage electricity, noise, and compressed air. When using CNC machines and their components, basic safety precautions, including all appropriate LOTO procedures must always be followed to reduce the risk of personal injury and mechanical damage.

It is the machine owner's responsibility to make sure all personnel who are involved in installation and operation of this machine are thoroughly acquainted with the procedures and safety instructions provided herein *BEFORE* they perform any actual work.

Only Fryer factory-trained service personnel should troubleshoot and repair the equipment.

Do not modify or alter this equipment in any way without first consulting Fryer Machine. Any modification or alteration of this equipment could lead to personal injury and/or mechanical damage and could void your warranty.



1. Keep machine and area around it clean and well lit. Never allow chips, coolant, or oil to remain on the floor. Do not leave loose objects on or around machine.

2. Use appropriate eye and ear protection while operating the machine. ANSI-approved impact safety goggles and OSHA-approved ear protection are recommended to reduce the risks of eye injury and hearing loss.
3. Keep all loose clothing, hair, and jewelry away from the machine at all times.
4. Gloves are easily caught in moving parts. Take them off before using the machine.
5. Always wear safety shoes with steel toes and oil-resistant soles.
6. Do not paint, alter, deface, or remove any warning plates from the machine. Replacement plates are available from Fryer Machine Systems.
7. Keep flammable liquids and materials away from the work area and hot chips.
8. Coolant and oils can make surfaces on the machine slippery. They can also present an electrical hazard if the machine has power on. Therefore, do not stand on any part of the machine at any time.
9. Keep vises, clamps, fixtures, or work pieces from extending beyond the back edge of the table.
10. Check for damaged parts and tools before operating the machine. Any part of a tool that is damaged should be properly repaired or replaced. Do not operate the machine if any component does not appear to be functioning correctly.
11. Improperly clamped parts machined at high speeds/feeds may be ejected and puncture the safety door. Machining oversized or marginally clamped parts is not safe.
12. To avoid tool changer damage, ensure that tools are properly aligned with the spindle drive lugs when loading tools.
13. Windows must be replaced immediately if damaged or severely scratched – contact the factory for replacement panels.
14. Do not attempt to operate the machine before all the installation instructions have been completed.
15. Be sure to review the maintenance section of this manual for instructions to keep your machine running properly.

1.01 Mechanical Safety

1. Always press Emergency Stop when the machine is not in use.
2. Never operate the machine with any cover or shield open or removed.
3. Never reach into the work area when the spindle is turning or if the machine is in automatic mode.
4. Put the machine in manual mode and be sure last programmed function has been completed before reaching inside of the work area.
5. The functions of the machine make it impossible to eliminate all pinch points. Be particularly aware of the following pinch points:
 - a. Spindle and tool rotation
 - b. Indexing of ATC and tools
 - c. Table, saddle, and head.
6. Do not operate machine without axis motor covers or axis waycovers in place.
7. Report any loose, worn, or broken parts to your supervisor. The same action should be taken if any unusual noise or machine action occurs.
8. The electric components are protected from normal moisture resulting from humidity or use of water-based coolants. **DO NOT** however, use a water hose to clean the machine or the area around it.
9. Never touch a machine control device or electrical component when your hand is wet.
10. Never clean up chips while the machine is running or is in automatic mode.
11. Do not file workpieces being rotated under power.
12. At the end of the workday the machine should be placed in "EMERGENCY STOP MODE"

13. When restarting a machine after it has been shut down always assume it has been altered. Recheck all phases of the job as though you were running the first piece.
14. Never run the spindle until hands, feet, and body are well clear of the work area.

1.02 Electrical Safety

1. **WARNING:** Electrical enclosures contain high voltage. Disconnect equipment from power source before opening cabinets.
2. **Before replacing a fuse, switch off the machine.**
3. **Immediately turn off power if:**
 - Power problems develop
 - In the event of electrical storms.
 - Ambient temperatures exceed 105 degrees Fahrenheit (40 degrees C)
4. The electrical power must meet the specifications in this manual. Attempting to run the machine from any other source can cause severe damage and will void the warranty.
5. The electrical panel should always be closed and locked except during service.
6. When the main circuit breaker is on, there is high voltage throughout the electrical panel and some components operate at high temperatures, therefore extreme caution is required.
7. Do not reset a circuit breaker until the reason for the fault is investigated.
8. Never service the machine with the power connected.

2.0 BASIC INSTALLATION

2.1 WHERE TO PLACE YOUR MACHINE

Thank you for choosing Fryer Machine Systems. You have purchased a high quality, custom crafted machine tool designed and built to provide years of trouble-free service. To ensure that your machine is properly installed we ask that you review the following information prior to the shipment of your machine.

2.11 Foundation

Your foundation must be a minimum 6“(150mm) thick concrete slab floor and should be placed on a single slab with no seams. Be sure to leave space around the machine for leveling components and access to the electrical cabinet.

If your floor does not meet these specifications, contact the factory for further recommendations.

Install the machine on the first or second floor. Take the stress of ceiling and foundation into careful consideration to ensure that the machine load can be offset.

2.12 Environmental Conditions

Generally, the machine will be installed in the following conditions. However, these may change over a period of time or in response to seasonal changes.

- Supply voltage: +/- 10% of voltage listed on serial number tag.
- Source frequency: ± 2 Hz of frequency listed on serial number tag
- Temperature effects dimensional accuracy, therefore, ambient temperatures should not exceed 105 degrees Fahrenheit. Also avoid exposing the machine to direct sunlight or heat rays which can change the environmental temperature.
- Relative Humidity: Less than 80% (Temperature changes should not cause condensation)
- Atmosphere: Free from excessive dust, fumes, corrosive gases, and salt
- Avoid exposing the machine to abnormal vibration.

2.2 Unloading Your Machine

Fryer machines are shipped on skids designed for forklift offloading. Be sure your forklift is rated for the proper weight of the machine.

Note: If you are using a crane for offloading, please contact the factory in advance for instructions as damage can occur if supported in the wrong locations.

2.3 RECEIVING YOUR MACHINE

NOTE: If you have a door that is less than 8' wide x 10' high, please contact the factory prior to shipment so that we can make sure your machine is packaged to fit into your door openings.

1. Fryer machines are carefully packed to avoid damage in transit; however, we ask that you **UNWRAP AND INSPECT YOUR MACHINE AS THOROUGHLY AS POSSIBLE PRIOR TO SIGNING THE BILL OF LADING**. If a digital camera is available, pictures should be taken before the machine is moved further. Pictures should be sent to service@fryermachine.com.
2. Place the machine in its location and complete inspection. If there is any damage to your machine, Fryer should be notified immediately. This will enable us to provide replacement parts before the service technician arrives install the machine.
3. If you have any questions about any of these installation instructions or other questions about your new Fryer Machine Systems machine, please call the Fryer Service Department and one of our trained technical staff will be happy to assist you.

2.4 Unpack and Place Your Machine

To make certain that your machine installation goes smoothly, it is important that the following items are completed **prior** to the arrival of the Fryer authorized service technician. This will ensure that our technician is able to provide you with the maximum amount of training during his allocated time with you.

1. Have your rigger move the machine to the operating location, remove it from the skid and install on ALL leveling pads.
2. Remove all packaging material and thoroughly clean the machine and inspect for hidden damage.
3. Remove all large assemblies from skids and stage next to machine to facilitate ease of assembly.
4. Install leveling pads and level machine. Level with a precision level, using the leveling screws and pads provided with the machine.

2.5 Prior To The Arrival of The Technician

2.51 Installation Safety Instructions

Initial start-up of the machine must be performed by a Fryer Machine Systems authorized service technician.

2.52 Cleaning & Lubricating Machine

- All protective coatings (cosmoline) must be removed before using the machine.
- Be cautious when selecting a suitable cleaning agent. Paraffin applied with a clean brush will soften the protective coating. The protective coating can then be removed with clean rags.
- WD-40 or a similar product is recommended for cleaning the machine. Do not use gasoline or any other flammable solution to clean the machine.
- Clean all exposed ways of the bed and saddle.

2.53 Line Voltage Check

Line voltage must be $\pm 10\%$ of the voltage listed on the serial number tag.

**INITIAL POWER-UP SHOULD ONLY BE PERFORMED BY
A FRYER TECHNICIAN OR FACTORY AUTHORIZED
REPRESENTATIVE.**

2.54 Electrical Precautions

ELECTRICAL SCHEMATICS FOR YOUR MACHINE ARE LOCATED IN THE ELECTRICAL CABINET AND IN THIS MANUAL.

Wiring

1. Ensure that all local electrical codes are met.
2. Do not connect to the power distribution panel any power cables for devices that can cause line noise, such as welders and high frequency quenching machines.

Grounding

You should always refer to your local electrical code to be sure you are grounding to code. Generally, use a grounding wire with a cross section of more than 14 mm and a resistance to ground of less than 100 ohms. This wire size should be greater than AWG (American Wire Gauge) No. 5 and SWG (British Legal Standard Wire Gauge) No.6.

Generally, the machine should be grounded to a separate grounding rod. If an independent ground cannot be provided for the machine, prepare the ground connection as follows:

1. Connect a single conductor to its own grounding terminal. This will avoid possible serious accidents resulting from ground currents that might otherwise flow in the NC machine if a peripheral device should malfunction.
2. Be careful when using concrete reinforcing rods as grounding points. These reinforcing rods often are used to ground equipment because they usually offer a resistance to ground of less than 100 ohms. In doing so, make the connection as follows: (This also applies to connecting ground wires to regular grounding terminals)
3. Do not use the same grounding reinforcing rod or grounding terminal for other devices since this could lead to line noise such as produced electric welders and high frequency quenching machines.
4. Use a grounding terminal with an adequate electrical performance rating and which is durable.
5. A separate grounding wire should be used, one whose length is as short as possible.
6. Check the resistance to ground by actual measurement.
7. This should measure less than 100 ohms if the single device is connected to its own grounding rod.

Desirable Independent Grounding: Earth resistance: Less than 100 ohms

Common Grounds: Resistance to ground = $100/\text{the number of devices connected to the grounding } (\Omega)$

NEVER GROUND EQUIPMENT IN SERIES!

Connection of Power Line

NOTE: Electrical installation should only be completed by a qualified electrician.

1. Make sure that the incoming power is compatible with the requirements of the machine tool (voltage, amperage, phasing). All this information can be found on the machine's serial number tag.
2. Power wires, grounding and over-voltage protection should comply with the local electrical code.
3. **DO NOT** connect if the incoming power is different from the power requirements of the machine. Contact a qualified electrician.

2.6 Leveling the Machine

Before attempting to use the machine, it will be necessary to accurately level it.

- Screw the leveling bolts (with nut) into the holes in the base of the machine. Set a leveling pad under.
- Please prepare the following tools to adjust machine level:
 - Precision level (0.0005"/ft. or 0.013mm/1000mm accuracy)
 - Two adjustable wrenches
- Clean the bed way and cross slide surfaces thoroughly and set one of the precision levels on the flat bed way in the longitudinal direction, and the other on the cross slide, perpendicular to the first (if there is only one level available, then use it on both directions alternately).
- Adjust the leveling bolts located the bottom of the machine base until the machine is leveled to within 0.001"/ft. (0.08mm/1000mm) in both directions.
- Lock the nuts on the leveling bolts, and re-check to see whether the level of machine is still correct. Repeat as necessary until machine level is obtained with leveling bolts locked.
- After initial installation, check the level once a week for the first month, then check monthly thereafter.

2.61 Leveling Procedure

Step 1

- Set up your precision level in the middle of the machine table parallel to the X-axis.
- With the table centered in the X and Y-axis, adjust the machine's four outside leveling studs to achieve level.
- Be sure that the center leveling pads are not touching and that all four outside pads have load.
- Also check to make sure that the machine casting is not touching the floor.



Step 2

- Now rotate the level 90 degrees so it is parallel to the Y-axis and again check level.
- Adjust the four outside leveling studs as needed.
- If any adjustments are required to achieve level, you must go back and re-check level with the level parallel to the X-axis.
- Repeat the adjustment process until the machine is perfectly level with the level parallel to both axes without further adjustment.



Step 3

- Adjust the center leveling studs until they are just touching.
- Again, verify the machine is level with the level parallel to both axes without further adjustment.

Step 4

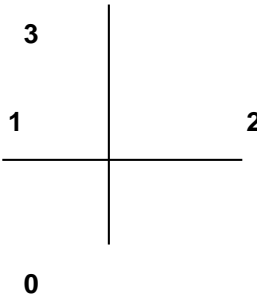
- With the level parallel to the X-axis, slowly move the table back and forth over full Y-axis travel check to see that the level does not change. Make any required adjustments to achieve level.

Step 5

- Re-center the table in the Y-axis and again verify that the machine is level with the level parallel to both axes.
- Check that all leveling pads have some degree of load.
- Lock the nuts on the studs once the correct level is achieved.

Step 6

- The final check is “trammig” of the head. This is accomplished by mounting the indicator base on the spindle nose and setting the indicator tip on the tabletop at position “0” shown below. Properly load the indicator tip and zero the indicator at position “0”. Sweep the indicator tip by rotating the spindle manually over a 12” diameter circle. The indicator should show no more than .0005” total indicator reading. Record the values found at positions 1, 2, and 3.

	<p>TABLE SWEEP</p>		<p><u>.0005"</u> OVER 12" DIAMETER IN X-Y AXIS</p>	<p>1</p> <hr/> <p>2.</p> <hr/> <p>3.</p>

3.0 GENERAL INFORMATION

3.1 Maintenance Schedule Chart

***FOR FURTHER MAINTENANCE DETAIL, REFER TO THE MACHINE COMPONENT SECTIONS IN THE MANUAL LISTED BELOW.**

CAUTION! Always follow all Lock Out / Tag Out procedures before performing any maintenance

MAINTENANCE ITEM	RECOMMENDED	Daily	Weekly	6 Mo	As Required
Check air pressure gage	90 – 125 PSI	X			
At the end of the day remove and dispose of chips	Use of brush or vacuum is recommended. Do not use air as it can push chips into waycovers and ballscrews.	X			
Check axis lubrication pump oil level	See Section 3.201 – Use Mobil Vactra #2 (ISO 68) or equivalent	X			
Clean chips from interior of ATC	See Section 3.204 for details		X		
Check pneumatic (air) lubrication oil	Add Mobil ALMO break free synthetic air tool oil (5W-10W)		X		
Check coolant level	Complete a visual inspection		X		
Check machine level	See Section 2.61 for details			X	
Check axis backlash	See procedure in Section 3.43			X	
Remove and clean underside of waycovers / check sliders and bumpers for wear and/or damage	See Section 3.44 for details			X	
Check wipers for adjustment / damage	See Section 3.44 for details			X	
Check ballscrew endplay	See procedure in Section 3.45			X	
Check axis motor belts	See procedure in Section 3.46			X	
Grease ATC cam pockets	See Section 3.24 for details			X	
Change coolant	Blasocut BC40 NF-PL or equivalent				X
Check and change electrical cabinet air filters	Use Purolator A23465 air filters				X
Change ATC gearbox oil	Mobilgear 600XP 150, Shell Omala EP 150-220 or equivalent				Yearly
Chiller fluid	Oil Chiller: VG-32 Oil				Yearly

3.2 Machine Components

3.21 Axis Lubrication System

- The automatic way lube system is controlled by the PLC in the control. The system only pumps way oil when the axes are moving. If there is no machine movement the pump will not pump unnecessary oil. This method greatly reduces way lube usage and keeps oil out of the machine coolant sump and prevents fouling.

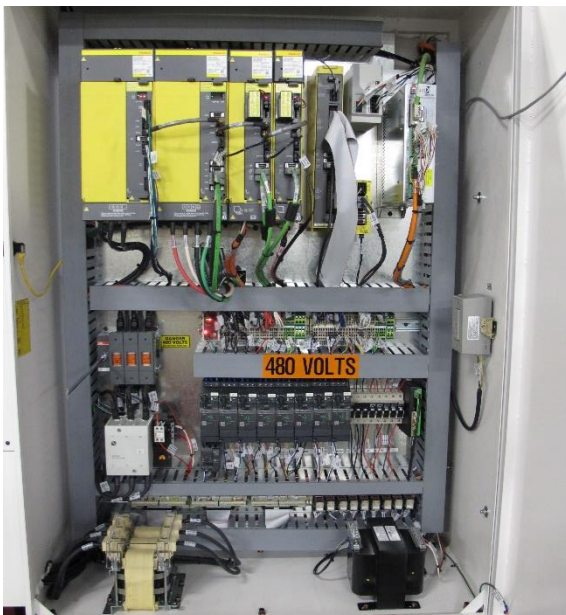


For illustrative purposes only. Your specific machine's lubrication pump may be different.

- If the machine has been unused for more than 48 hours press the blue pushbutton on the side of the lube tank for approximately 30 seconds to pump oil to the ways. The pressure gage on the tank will indicate if it is working properly.
- If the system detects low way lube it will display the following message in the control:

A003.12001 LOW WAY LUBE

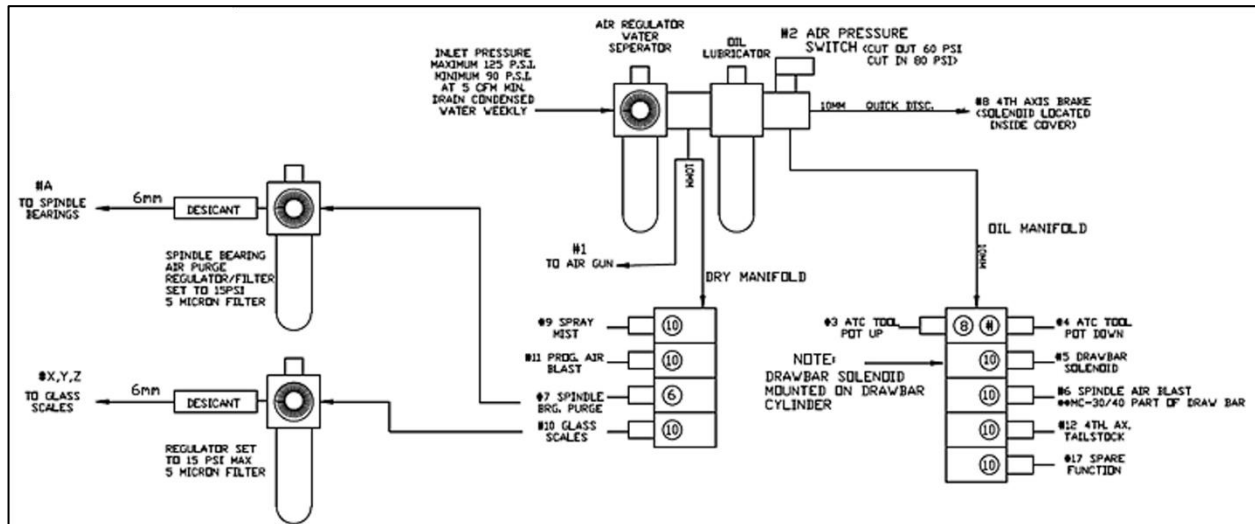
3.22 Electrical System



- Schematics– The Electrical and Pneumatic Schematics are inside electrical cabinet
- Cabinet Filter Type – Purolator A23465 or equivalent
- Check Filter Interval - Weekly
- Change Filter Interval – As Required (depending on environment)

3.23 Pneumatic System

- Pneumatic Schematics for your machine are located in electrical cabinet door pocket(see previous page)
- A list of the different solenoids and pressure settings is located on a sticker where the solenoids are located.
- Some of the basic solenoids are listed below:
 - Air Gun
 - Air Pressure Switch
 - ATC Tool Pot Up
 - ATC Tool Pot Down
 - Drawbar Solenoid
 - Spindle Air Blast (Option)
 - Spindle Bearing Purge (Option)
 - 4th Axis Brake (Option)
 - Spray Mist (Option)
 - Glass Scale Air Purge (Option)
 - Programmable Air Blast (Option)
 - 4th Axis Tailstock Brake (Option)



- Lubrication Requirements – Mobil Almo break free synthetic air tool oil 5W-10W or equivalent
- Check Lubrication Interval – Weekly – Add as needed

3.24 Automatic Tool Changers Information

40 Taper 20-Position, Carousel Style Tool Changer

- Maximum Tool Diameter – 4.10”
- Maximum Tool Diameter with adjacent positions empty – 7.90”
- Maximum Tool Length – 15.00”
- Maximum Tool Weight – 16.5 lbs.

40 Taper 24-Position Arm Style Tool Changer

- Maximum Tool Diameter – 3.2”
- Maximum Tool Diameter with adjacent positions empty – 5.5”
- Maximum Tool Length – 11.8”
- Maximum Tool Weight – 15.4 lbs.
- Tool Change Time: 3 seconds

40 Taper 40 & 60-Position Arm Style Tool Changer

- Maximum Tool Diameter – 3.55”
- Maximum Tool Diameter with adjacent positions empty – 6”
- Maximum Tool Length – 11”
- Maximum Tool Weight – 17.5 lbs.
- Tool Change Time: 3 seconds

50 Taper 24 & 40-Position Arm Style Tool Changer

- Maximum Tool Diameter – 5”
- Maximum Tool Diameter with adjacent positions empty – 8.9”
- Maximum Tool Length – 11.8”
- Maximum Tool Weight – 35.25 lbs.
- Tool Change Time: 4 seconds

3.25 Spindle Information

Thermal expansion of the machine components can jeopardize machining accuracy. To prevent this condition always warm the machine up.

SPINDLE WARM UP – Use the chart below for daily startup

Warm Up Cycle	10 minutes @ 25% of maximum speed
	10 minutes @ 50% of maximum speed
	10 minutes @ 75% of maximum speed

SPINDLE DUTY RATING – Follow the duty rating outlined below for **6K, 8.5K & 10K RPM Spindles**

- If it is required for the spindle to run continuously (24 hours a day), the spindle must not run above 80% of the maximum RPM.
- If it is required for the spindle to run at maximum RPM, the spindle must not run more than 2 hours straight. After 2 hours of run time at maximum RPM, the spindle must be slowed down to 50% of the maximum RPM for at least 30 minutes before running at the maximum RPM again.
- **For 12K, 15K & 21K RPM Spindles run at 100% Duty Cycle.**

3.26 Coolant Systems

Flood Coolant - Standard

The standard flood coolant system consists of a submersible flood pump mounted on the coolant tank, generally at the rear of the machine. The flood line runs up the back of the column and through the Z-axis cable track. It splits at a y-fitting in the headstock where it runs to two separate lengths of loc-line. It flows a maximum of 9 GPM.

Coolant Thru Spindle Systems (optional)

- Available for 40 or 50 taper spindles.
- The 350 PSI System has an adjustable range of 100 to 350 PSI. Features full pressure even with tool coolant holes up to .200" diameter.
- The 1,000 PSI System has an adjustable range of 300 to 1,000 PSI. Features full pressure even with tool coolant holes up to .100" diameter.
- Both systems includes high volume 8 gallon / minute pumps and a 10-micron replaceable filter cartridge.
- Machines with this option include a top cover on the machine.

High Pressure Washdown System & Washdown Hose (optional)

- Washdown system consists of one high volume submersible pump. For larger machines, may use two of these pumps.
- On the output of the pump is a T-fitting one line feeds the washdown hose and the other line feeds the washdown nozzles inside the enclosure.
- A ball valve is located between the line that feeds the hose and the line that feeds the nozzles so volume of flow can be adjusted when using both the nozzles and the hose at the same time.

Do not deadhead the pump by shutting off the pump's ability to discharge fluid. Components in the pump can heat to the point that they will severely damage the pump.

3.27 Optional Tool Probe Calibration

Note the Fryer probe will only work with conductive tools.

The following variables are set automatically during complete calibration. It is not necessary for you to preset the values. You can just use this for reference.

NOTE: Variables marked * are distances in the machine co-ordinate system, and not the program coordinate system.

SETTING VARIABLE		INTERNAL VARIABLE
#520	* Z calibration value (non-rotating tools)	#107
#521	* Z calibration value (rotating tools)	#113
#522	Stylus size for diameter setting	#110
Manually set the following:		
#523	* X axis stylus centre position	#111
#524	* Y axis stylus centre position	#112

Make sure none of these variables are used in other macros or programs.

Tool Probe Calibration

To test that the probe is functioning properly:

- Move the Z axis to the middle of its travel, at least 6" from the probe.
- Command in MDI the following probe Z axis calibration cycle: G65P9851K1

The Z axis should move towards the table by the default amount of .56" then move up and display a probe fault.

If it does not do this check all of the above parameter settings.

If the probe operates as explained above, then issue the Z axis calibration cycle again.

As soon as you press cycle start to execute the command deflect the probe. This should cause the Z axis to move up.

It will then move down again deflect the probe again, it will move up. This means the probe is operating correctly.

- Use a 1/2" dowel pin in a tool holder (collet) as a master, move dowel to top of table, record machine Z-axis position. This will be used as K in the probe calibration cycle.
- Now move dowel above and centered over tool probe. It must be less than .500 inch above probe.
-Run this probe length calibration cycle: G65P9851K_____ (K is the Z value you obtained above). This will set the Z probe calibration value. Refer to Renishaw manual for more details.
- In order to test the operation of the probe, first set the approximate tool length offset in the offset table. (The tool length is the distance from the tip of the tool at Z home position to the tabletop.)
- Use a tape measure to set this within an 1/8".
- An MDI or a Program can be used to set tool length offsets.

In the example below we are using H1 and T1.

```
G65P9853B1T1;
```

The B1 means only set length offset, the T1 will use tool 1 offset and set it correctly.

- In order to activate the tool offset, set the machine to incremental mode G91 in MDI. Then G91G43H2Z0 will cause the offset for tool 2 to be active and the machine to move Z incrementally 0". If you handwheel the Z axis the tabletop should read 0". Anything above the table will be a positive value.
- Now you can put in the distance from the top of the part to the table a fixture offset in Z, this must be typed into the Z fixture offset you plan on using in your program.

- Now you will have all your offsets set correctly.

3.28 Optional Part Probe Calibration

1. Macro 9810 is a protected probe move; this should be used whenever the probe is in the spindle to position it. Here is a program example to test probe operation: Bring the probe alongside a piece of steel on the table, about 1/4" away. Do the following in MDI to test the p[protected move works: Note the x position must be beyond the obstruction.

```
G91 G65 P9810 X-1 F10
```

2. Once the probe starts to move towards the table, deflect the probe and the axis should stop moving. An alarm should be generated stating 3086 path obstructed. This will test the function of the probe.
3. Now the ring gage should be mounted to the table and indicated in to find the center, and a fixture offset should be set for the exact center location (use G54). Set a tool offset and radius for the probe.
4. Calibrating the Stylus X and Y offset (9802)

```
O0402(PROBE STYLUS CAL)
G20G40G80G90
G1F50G43H2Z5.0
G55
G0X0Y0
G65P9810Z-.25F20
G65P9802D2
G65P9810Z2F20
M30
```

5. Calibrating the vector stylus ball radius (9804)

```
O0403(PROBE BALL CAL)
G20G40G80G90
G1F50G43H2Z5.0
G55
G1F200X0Y0
G65P9810Z-.25F20
G65P9804D2
G65P9810Z2F20
M30
```

6. Program to test to make sure probe can set a G55 at center of ring gauge:

```
G65 P9814D2S2
```

This will calibrate fixture offset #2 G55 in a 2" bore.

3.3 BASIC MACHINE PROCEDURES

3.31 FANUC Machine Reference Procedure after Absolute Encoder Alarm

PROCEDURE TO BE PERFORMED BY QUALIFIED PERSONNEL ONLY

This procedure must be followed after the encoder is disconnected or battery for the absolute encoder goes dead or if parameters are reloaded.

The machine normally remembers the position of the table due to the absolute encoder tracking. If this is lost the machine home position is also lost. Each axis should be positioned at the home position and the alignment marks lined up. The home position is always within an inch of the positive travel of each axis. The alignment marks are red or black painted button head screw that is marked as the home position marker and align it with scribed line or pointer on the axis to be set.

Follow the procedure below to reset this home position.

Referencing the axis: The X, Y and Z-axis have battery backed up encoder's, (absolute encoders). The control will give advance notice of a weak battery so it can be changed before position loss occurs. If the encoder is disconnected an error will occur, you will have to reference the axis follow this procedure:

To change parameter, write enable must be in MDI (push MDI hard key).

1. Press-offset setting-parameter-write enable (OFS/SET hard key twice) set parameter bit to a 1. The "key" needs to be switched to the [0] position, the key cannot be removed, this enables the write capability.
2. Press system (hard key)- type 1815 -press -no. Search (this will find parameter 1815 which is the reference position parameter setting- set APZ bits for axis wishing to reference to 0. If you already have an alarm about lost encoder position the troubled axis will have a zero set in this bit, you can go to step 4.
3. Power down completely.
4. Power up, drives on and jog the axis requiring referencing to align with scribe marks on red painted washer. Be very careful you do not crash the machine!
5. Change 1815 APZ bit to 1 for axis wishing to reference. Change the parameter write enable bit to 0
6. Power down completely.
7. Power up, drives on, the axis display should read 0 and there should be no alarms.

3.32 Check Axis Backlash

Tools Required: 0.0001" resolution dial indicator, remote handwheel (manual pulse generator)

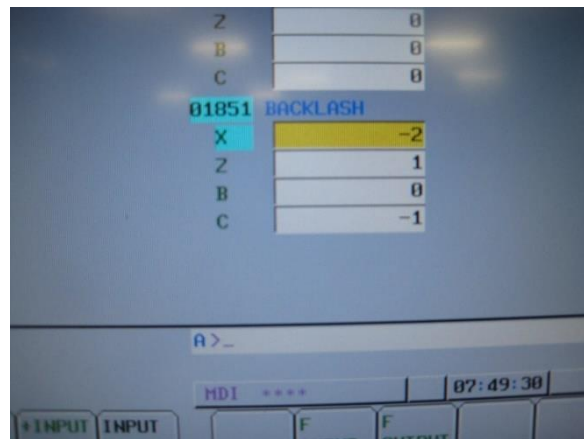
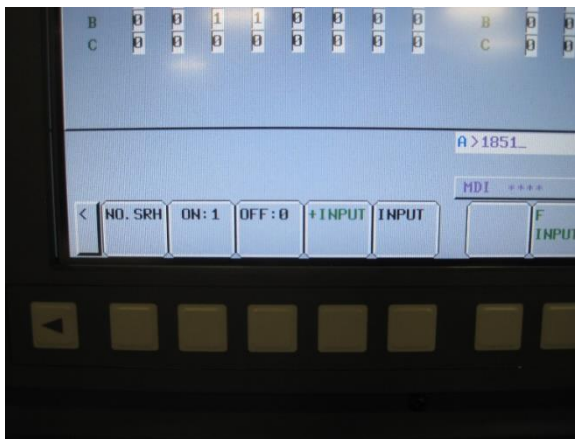
- Set the indicator along the axis which is being measured. The needle should be in contact with a flat machined surface and the base on a stable, fixed point. See the pictures below which illustrate the setup for the X, Y, and Z axes.
- Using the remote handwheel, move the axis in one direction either positive or negative until the indicator is loaded by 0.002".
- Zero the indicator.
- Move the axis in the same direction by 0.005".
- Reverse the direction of the axis by 0.005".
- The additional amount that is needed to reach zero after the 0.005" reverse in direction is the backlash measured.

- This shows the loss of motion in the axis from the ballscrew and linear guide rails. Backlash compensation can be adjusted according to the procedure outlined below in *Section 3.33*.



3.33 Adjusting Backlash Compensation

PROCEDURE TO BE PERFORMED BY QUALIFIED PERSONNEL ONLY



3.34 Working With Waycovers

- When working with steel waycovers, several precautions must be taken:
- Do not put excessive weight on the waycovers (50lbs. max.)
- Protective gloves should be worn while handling waycovers, as the metal edges can be sharp.
- Covers should be cleaned regularly to avoid any build-up of chips or debris. It is recommended that the underside of the covers be thoroughly cleaned at least every 6 months.

To remove the waycovers for service:

- Jog the axis being worked on so that the cover to be removed is in the fully compressed position.
- Next, remove the cap head screws attaching the cover to the moving axis and to the waycover standoff (if applicable).
- The waycover can now be removed by simply pulling it off the way surface.

To check waycovers for wear and/or damage:

- Make sure the covers slide open and closed freely and that there are no dents or visible damage that would impair free movement of the covers.
- Inspect the plastic sliders and rubber bumpers under the waycover to make sure they are in place and not damaged or worn.

To reinstall the waycovers on the machine:

- Slide the cover on the appropriate way surface making sure that it is clear of debris.
- Insert the cap head screws to the moving axis and the standoffs (if applicable) and **hand tighten only**.
- To properly align the waycover, jog the axis to the position where the waycover is in full extension, and then full compression.
- With the waycover fully compressed, all cap head screws can now be tightened.
- Run the axis back and forth slowing over full travel check for any visual signs of misalignment.
- Now rapid the axis back and forth over full travel again check for any signs of misalignment.

3.35 Check / Adjusting Ballscrew Endplay

* It is important to read and understand the procedure 3.34 *Working with Waycovers*, before executing this procedure.

- Tools Required: 0.0001" resolution dial indicator, remote handwheel (manual pulse generator), metric allen key set, spanner wrench.
- Check Endplay: You will need to access the pulley end of the ballscrew for the axis being worked on. To do this, remove the left side waycover and the belt cover for the X-axis. Remove the front waycover and belt cover for the Y-axis. The top end of the z-axis ballscrew is accessible by just moving the head down. Place a dial indicator needle on the end of the ballscrew. Load and zero the indicator appropriately. Using the remote handwheel set to x100 for the appropriate axis, change axis direction back and forth and observe any axial motion shown on the indicator. Endplay should be no more than .0001". This can also be accomplished by jogging each axis using the manual panel buttons or manually by using an allen wrench on the end of the ballscrew.
- Adjusting Endplay: If ballscrew endplay is greater than 0.0001", it must be adjusted. To do so, loosen the 3 set screws on the ballscrew spanner nut adjacent to the motor coupling. Using a spanner wrench, tighten the nut. The ballscrew will have to be held stationary with an allen key on the opposite end. Tighten the set screws and recheck the endplay. Repeat the tightening procedure if necessary. Once the ballscrew endplay is .0001" or less, re-install any sheet metal or motor covers and re-install the waycover(s) as applicable.

3.36 Check Axis Motor Belts

- The axis motors are connected to the ballscrews via pulley driven belts. Belts should be checked for excessive wear and proper tension at least every 6 months.
- To access the belts, remove left side belt cover for the X-axis and the front belt cover for the Y-axis.
- The Z-axis belt is located on the top of the column
- Once you have gained access to the belts, inspect them for any visible signs or wear or damage. Once the belts are considered acceptable, check each belt for proper tension.
- Belt tension is adjusted by loosening the slotted motor plate and sliding the motor-plate assembly to tighten or loosen the belt as required. Double check all hardware is properly tightened once the belt tension is correct.
- After the inspection is complete and any adjustments made, re-install the belt covers.



X-AXIS



Y-AXIS



Z-AXIS

4.0 FANUC CONTROL

4.01 Accessing Machine Parameters

PROCEDURE TO BE PERFORMED BY QUALIFIED PERSONNEL ONLY

WARNING

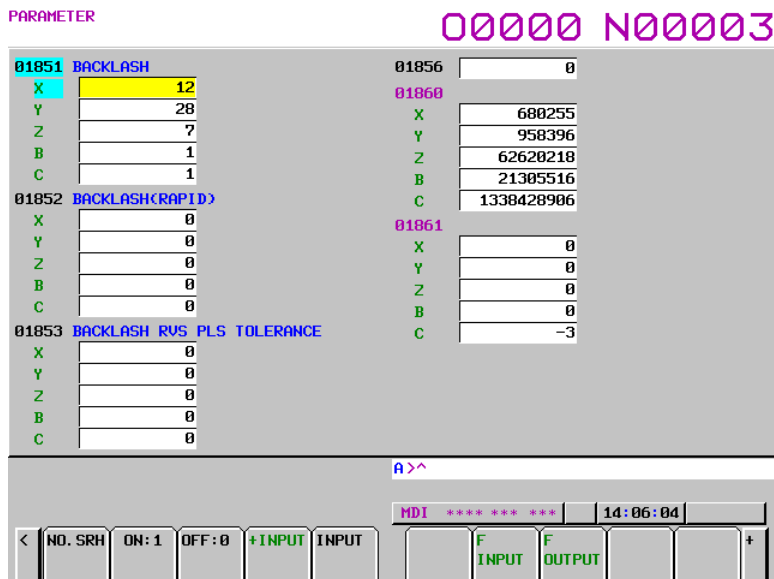
Malfunctions of the machine as a result of incorrect or changed parameter settings

As a result of incorrect or changed parameterization, machines can malfunction, which in turn can lead to injuries or death.

- Protect the parameterization (parameter assignments) against unauthorized access.
- Handle possible malfunctions by taking suitable measures, e.g. emergency stop or emergency off.

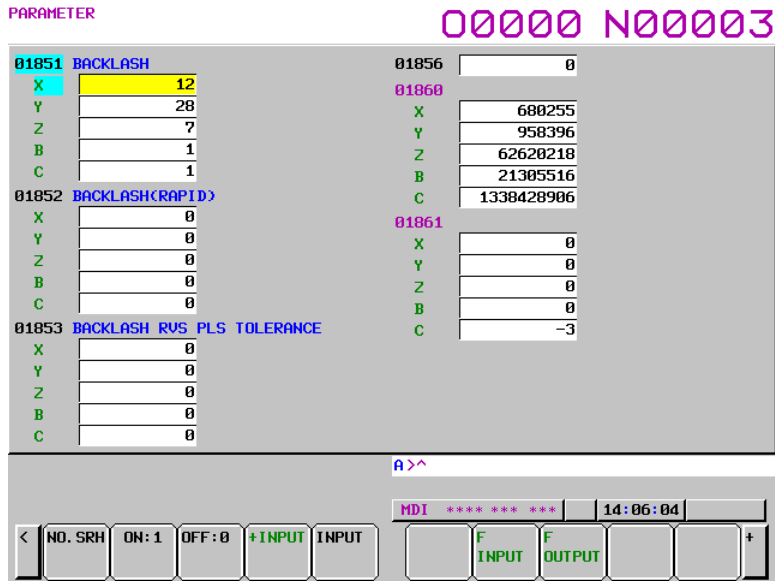
Setting Parameter Write Enable (PWE)

- Make sure drives are enabled (E-stop out)
- Press MDI
- Press “OFF/SET” hard key
- Press “setting” soft key (may have to press “+” softkey to see the soft key button)
- See below screen will appear:
- Change Parameter write =1 (this should be changed back 0 to prevent parameter changes)



- Getting to the machine parameters
- Press “SYSTEM” Hard key
- Press “+” soft key until “parameter” soft key is visible.
- Press “parameter” soft key
- Press “opr” soft key
- Type in desired parameter number
- Press “No. SRCH” soft key

- See below screen shot where parameter 1815 is displayed. Cursor can be moved about, and data changed with numeric keys and input button.



4.02 Parameter Write Enable + USB

PROCEDURE TO BE PERFORMED BY QUALIFIED PERSONNEL ONLY

This procedure will allow editing and copying machine parameters from the USB stick.

Setting Parameter Write Enable (PWE) and USB stick for I/O

1. Make sure drives are enabled (E-stop out)
2. Press MDI
3. Press “OFF/SET” hard key
4. Press “setting” soft key (may have to press + softkey to see the soft key button)
5. See below screen will appear:
6. Change Parameter write =1
7. Change I/O Channel =17 Make a note if there is a different value in there as this how the programs are put into the control could be RS-232, Network, USB, or PCMCIA.

4.03 Saving Parameters to USB

PROCEDURE TO BE PERFORMED BY QUALIFIED PERSONNEL ONLY

This procedure will allow the parameter file to be saved a USB stick.

Before these procedures can be performed make sure Parameter write enable is on and the I/O channel is set to the USB (see **4.02 Parameter Write Enable + USB)

Saving Parameters

1. Reset drives
2. Position machine to machine zero (all axis)
3. Insert USB stick
4. Press edit

5. Press system
6. Press “parameter” soft key
7. Press “oprt” soft key
8. Press “+” soft key
9. Press “F output” soft key
10. -press “exec” soft key (output should be flashing on lower right corner of screen)

Now you will have a file called “CNC-PARA.TXT” you should rename this on a pc to another name for future use. **Do not overwrite an existing file on the memory card.**

4.04 Loading Parameters From USB

PROCEDURE TO BE PERFORMED BY QUALIFIED PERSONNEL ONLY

This procedure will allow the parameter file to be loaded from a USB stick.

****Before these procedures can be performed make sure Parameter write enable is on and the I/O channel is set to the USB (see 4.72 *Parameter Write Enable + USB*)**

Reloading Parameters

1. Make sure all axes are at machine zero
2. Press EDIT
3. Press system
4. Press “parameter” soft key
5. Press “oprt” soft key
6. Press “+” soft key
7. Press “F input” soft key
8. Press “exec” soft key (input will flash in lower right-hand corner of screen)
9. Power down including main disconnect wait 1 minute before powering up again.

Once the drives are turned on you may have to zero return the machine, make sure all axes are at machine zero then change parameter **1815 APZ bit=1 for all axes.**

This can be done with the following keystrokes:

-param-1815-no.srh, this will get you to edit the correct parameter. Use the arrow keys and the 1 soft key to set the proper bit.

4.05 FANUC PLC Installation Procedures USB

PROCEDURE TO BE PERFORMED BY QUALIFIED PERSONNEL ONLY

This procedure will explain how to save the current PLC and install a newer version with a USB stick. If the new PLC is sent to you by e-mail note the name of the file and put on the USB stick.

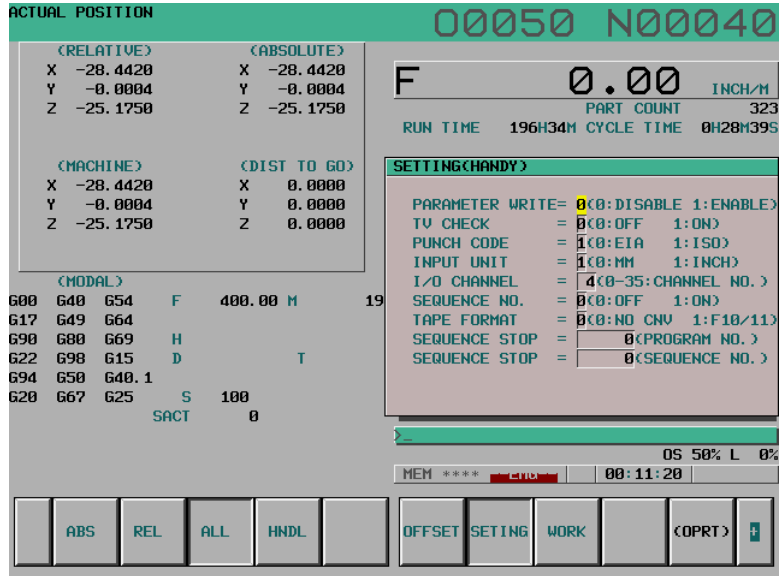
Important Notes: Make sure your program protect key is off. Make sure your i/o channel=17 to be able to use the USB stick (see screen below, it is set to a 4). If you have the smaller screen, the right arrow may have to be pressed to see the rest of the soft keys available.

4.06 Saving Current PLC

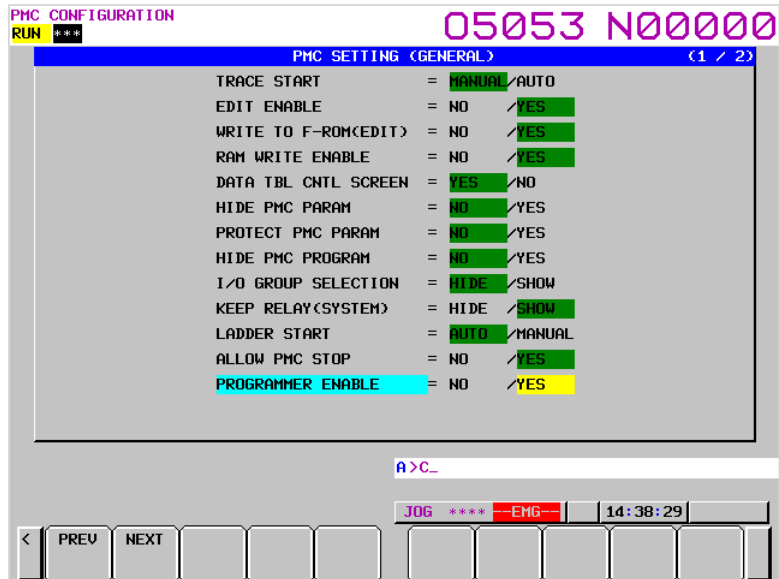
1. Move the machine to machine zero in all axes. And set the MDI mode
2. Press the E-stop button in

3. Confirm that parameter write enable is on:
 - a. Press "offset/setting" hard key several times (this will scroll you through menus) until you find parameter write enable
 - b. Set this to a 1 to allow editing parameters, use soft keys.

Below is the Setting Screen:



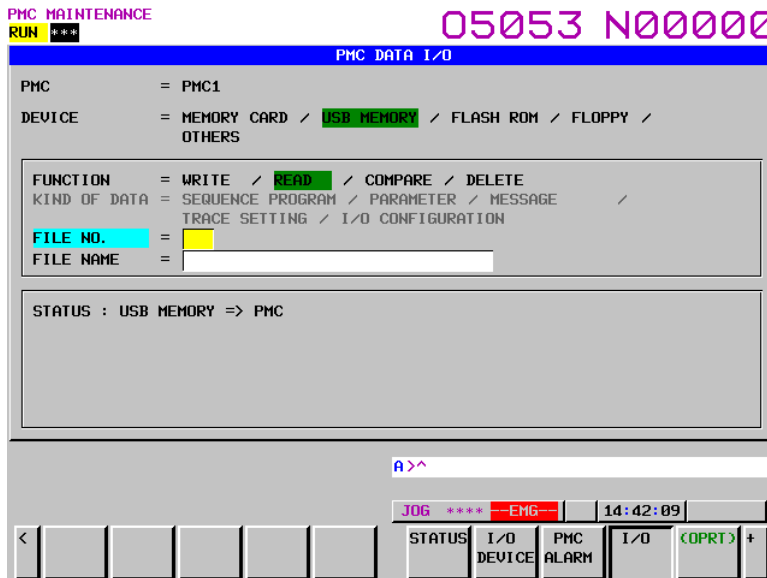
4. Press "system" hard key.
5. Press "+" soft key on the bottom of the screen which is the > arrow key below it. Until you see the softkey "pmc config"
6. Press "Pmc config" soft key.



7. Press "Setting" softkey. The following screen is what you will have to change in the next step:
8. The yellow square is the cursor, navigate using the arrow keys on the keyboard to replicate your screen as above.
9. Once the above parameters are set use the left arrow soft key "<" to go back to the PMC soft key menu.(May have to press two times to see the "PMC mainte" soft key)

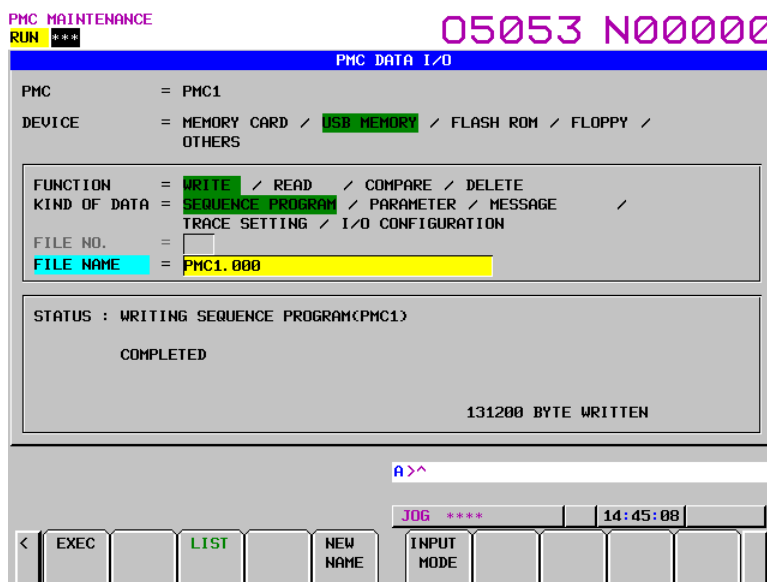
10. Press "PMC mainte" soft key

11. Press the + ">" softkey until you see the "I/O" softkey and press it. The screen below will be displayed.



4.07 Saving the Existing PLC

1. Insert USB stick(must have new version of PLC on this card)
2. Make sure the following is set correctly on the screen. The values can be changed by scrolling to highlighted field with the arrow keys
 - a. Device: USB Memory
 - b. Function = Write
 - c. Kind of Data = Sequence Program
3. Cursor down to File No. and press softkey "oprt"
4. Press soft key "new name" This will enter a file name for the existing PLC loaded into your machine. It will back up your old ladder onto the USB stick in the next step. You can use this if the new PLC does not work.



5. Press "exec" soft key This will output the PLC to the USB stick make a note of the filename.

4.08 Loading the New PLC

1. When the cursor (yellow box) is to the right of File name= Press softkey "list"
2. Scroll and highlight new PLC on USB stick press softkey "input"
3. Move the highlighted cursor to set the following fields
 - a. Device: USB Memory
 - b. Function = Read
 - c. Kind of Data = Sequence Program
 - d. File Name= "new plc e-mailed to you"
4. Press "exec" soft key, this will load the new plc into the machine.
5. Now use the arrow keys to highlight the following fields:
 - a. Device: Flash ROM
 - b. Function = Write
 - c. Kind of Data = Sequence Program
6. Press "exec" soft key
7. Now we must turn off the parameters that were enabled to load the new PLC.
8. Press "<" soft key, twice until you see the softkey "pmc config"
9. Press "pmc config" softkey.
10. Press the "setting" soft key, use the cursor keys to reset the fields back to "no" as in the screen shot #2
11. Confirm that parameter write enable is off:
 - a. Press "offset/setting" hard key several times (this will scroll you through menus) until you find parameter write enable
 - b. Set this to a 0 to not allow editing parameters, use soft keys.
12. Re-boot control, you are done. Make sure to save the new PLC in a safe place in case you have to reload it to the machine.

4.09 M-Codes

An M code in CNC programming controls miscellaneous machine functions, including starting and stopping specific actions or programs.

M00	PROGRAM STOP
M01	OPTIONAL PROGRAM STOP
M02	END OF PROGRAM
M03	SPINDLE CLOCKWISE
M04	SPINDLE COUNTERCLOCKWISE
M05	SPINDLE STOP
M06	TOOL CHANGE REQUESTED
M07	MIST COOLANT OUTPUT OR PROGRAMMABLE AIR BLAST
M08	FLOOD COOLANT (SPINDLE MAY HAVE TO BE ON)
M09	COOLANT (M7,M8 COOLANT OFF)
M10	INDEXER CYCLE START WAIT FOR COMPLETION
M11/M12	MISC. MCODE ON/OFF
M17	HIGH PRESSURE THRU SPINDLE COOLANT ON
M18	HIGH PRESSURE THRU SPINDLE COOLANT OFF
M19	SPINDLE ORIENT
M20	CHIP AUGER ON (CHIP WASHDOWN. PRIME PUMP FIRST)
M21	CHIP AUGER REVERSE
M22	CHIP AUGER OFF
M23/M24	2ND PROGRAMMABLE AIRBLAST ON/OFF
M40	SHIFT GEARBOX INTO LOW RANGE
M41	SHIFT GEARBOX INTO HIGH RANGE
M50	DISABLE SPINDLE DRIVE FOR INDICATING PURPOSES
M51	ENABLE SPINDLE DRIVE FOR OPERATION
M52	ATC CAROUSEL IN (ARM ATC POT DOWN)
M53	ATC CAROUSEL OUT (ARM ATC POT UP)
M54	DRAWBAR ON
M55	DRAWBAR OFF
M58	ATC CAROUSEL CW 1 POSITION
M59	ATC CAROUSEL CCW 1 POSITION
M61	HOME ATC CAROUSEL TO POCKET 1, ASUMES TOOL 0 IN SPINDLE
M62	ARM ATC GRAB TOOL(ON ELECTRIC ATC ALSO SWAPS TOOLS AND GOES UP)
M63	ARM ATC ARM ORIGIN
M64	PNEUMATIC ARM ATC ARM DOWN AND SWAP TOOLS
M65	PNEUMATIC ARM ATC ARM UP

Note: M-codes may change depending on options the machine is equipped with.

4.10 Alarms

An alarm will be displayed once a fault occurs.

! Warning: *If you do not heed an alarm that is issued and do not resolve the cause of the alarm, it can present a hazard to the machine, the work piece, the saved settings, and in certain circumstances, may cause injury.*

4.11 FRYER PLC Alarms and Descriptions

These are **FRYER** Machine specific alarms that are for optional equipment installed on the machine. The alarms are listed below:

NO.	ADDRESS		MESSAGE
0.0009	A001.0	1001	LOW WAY LUBE
0.0010	A001.1	1002	LOW AIR PRESSURE
0.0011	A001.2	2001	ATC HOME REMOVE TOOL FROM SPINDLE
0.0012	A001.3	2002	TOOL NUMBER [I220, D110] IS IN SPINDLE
0.0013	A001.4	1003	ERROR TOOL CODE NOT ALLOWED
0.0014	A001.5	1005	SPINDLE CHILLER ALARM
0.0015	A001.6	1006	HIGH PRESS. COOLANT FAULT
0.0016	A001.7	1007	GEARSHIFT FAULT
0.0017	A002.0	1008	OUT OF GEAR FAULT
0.0018	A002.1	1009	ATC ARM OUT OF POS 1010PROBE FAULT
0.0019	A002.2	1010	PROBE FAULT
0.0020	A002.3	1011	ATC CAR. MISCOUNT-DO M61!!!!
0.0021	A002.4	1012	ATC E-STOP ALARM-CHK TOOLS
0.0022	A002.5	1013	ATC ABORTED BY RESET-CHK TOOLS
0.0023	A002.6	1014	DOOR INTERLOCK OPEN
0.0024	A002.7	1015	PROBE BATTERY LOW
0.0025	A003.0	1016	DOOR CLOSE OBSTRUCTION-TIMED OUT
0.0026	A003.1	2001	WAY LUBE PRESSURE FAULT

4.12 Clearing an Alarm

1. Press **RESET**
2. Certain alarms will require a reboot of the control to clear.

4.63 Set Up the Network Drive in the FANUC

! NOTE: *It is recommended that this procedure be performed by an experienced network administrator.*

The transfer of programs can be achieved by mapping a soft- key to a networked computer.

5.1 - CAROUSEL STYLE ATC OPERATION

5.2 Safety Rules -- READ BEFORE OPERATING CAROUSEL ATC

CAUTION! Always follow all Lock Out Tag Out procedures before performing any maintenance

- Due to the complexity and timing of the ATC, it should only be operated with the **M6** command.
- **Never interrupt the tool changer in the middle of cycle, wait for it to complete the tool change.**
- The carousel motor is a 3-phase motor and must be phased correctly for proper direction. The machine is phased properly at the factory before shipment, so if the carousel rotates in the wrong direction, switch any two incoming power wires at the disconnect. **Make sure the main power breaker is off!**
- **M58** moves carousel position CW one position, **M59** moves carousel position CCW one position.
- If the T code is programmed on the same line as the M6 command, make sure the M6 is before the T code (example: M6T4).

5.3 Manual Operation of the Carousel Tool Changer

PROCEDURE TO BE PERFORMED BY QUALIFIED PERSONNEL ONLY

The following is the process to manually step through the tool change operation in MDI.

NOTE: Make sure you follow these steps in sequence to prevent damage to the ATC or machine.

The proper sequence of a tool change and the respective M-codes are as follows:

1. T-code executes to move carousel to pending tool.
2. **M19** orient, and **G0Z&P#1130**, move z axis to tool change position.(Fanuc uses G91 G30 Z0, to move z axis to tool change position)
3. **M52** – Tool change carousel in position.
4. **M54** - Drawbar open to unclamp tool.
5. **M55** Drawbar close to clamp tool in spindle.
6. **M53** Tool change carousel out position.

5.4 - ARM STYLE ATC OPERATION

5.5 Safety Rules -- READ BEFORE OPERATING ARM STYLE ATC

CAUTION! Always follow all Lock Out Tag Out procedures before performing any maintenance

- Due to the complexity and timing of the ATC, it should only be operated with the **M6** command.
- **Never interrupt the tool changer in the middle of cycle, wait for it to complete the tool change.** If a low air alarm sets and the tool gets stuck in the spindle, then go to the **Recovering from Tool Change Failure** section of this document.
- This is a random-access tool changer to reduce tool change time. The machine will always keep track of the correct tool even though it may not agree with the bin #.
- **M58** moves carousel position CW one position, **M59** moves carousel position CCW one position.
- If the T code is programmed on the same line as the M6 command, make sure the M6 is before the T code (example: M6T4).
- Most tools have a deeper notch on one side of the tools v-flange. The ATC carousel will only allow this deeper notch to fit into the carousel key. Make sure when installing tools in spindle this orientation is verified.

After spindle orientation the key slot on the v-flange of the tool furthest from the operator will align with the key on the carousel.

5.6 Manual Operation of the Arm Style Tool Changer

PROCEDURE TO BE PERFORMED BY QUALIFIED PERSONNEL ONLY

The following is the process to manually step through the tool change operation in MDI.

NOTE: Make sure you follow these steps in sequence to prevent damage to the ATC or machine.

Manual operation of tool change solenoid valves

If the tool changer gets hung up the solenoid valves can be operated manually to reset the tool changer.

Access the air solenoid valves for the tool changer behind the door on the front of the ATC.

There is a diagram of the operation of each solenoid. These can be run manually by depressing the blue manual override buttons.

Here is a description of the operation of the valves.

Make sure you push the buttons in sequence otherwise damage could be done to the ATC.

- There are three two-way solenoid valves mounted horizontally.
- The top solenoid valve controls the carousel tool pot; left button returns tool pot to up position; right button drops pot down.
- The middle solenoid controls the arm movement 60° under the spindle and to normal rest position. The right button moves the arm under the spindle nose to grab a tool, left button moves the arm back to its normal clearance position.
- The bottom solenoid controls the arm down and 180° and arm up. The right button moves the arm down and then 180°, the left button returns the arm up.

The proper sequence of a tool change and the respective M-codes is as follows:

T-code to move carousel to pending tool

1. **M52** tool pot down
2. **M19** orient, and **G0Z&P#1130**, move z axis to tool change position.(Fanuc uses G91 G30 Z0, to move z axis to tool change position)
3. **M62** Arm moves under spindle to grab tool and carousel pot
4. **M54** turns drawbar on
5. **M64** Arm removes tool from spindle and carousel tool pot and swaps them
6. **M65** Arm up to install pending tool in spindle and old tool into carousel pot.
7. **M55** Drawbar off to grab tool in spindle.
8. **M63** Arm origin
9. **M53** carousel tool pot up

5.7 Setting Tool Change Height

PROCEDURE TO BE PERFORMED BY QUALIFIED PERSONNEL ONLY

The proper tool change height must be set for the ATC to perform correctly. The tool change height (machine coordinates from home position) is stored in parameter MC_1130 in the machine setup (Fanuc parameter P1241).

This will have to be checked if the home position is different due to removing the z motor or home switch or dog. Here is a procedure to set this height correctly: There is some allowance (play) allowed for the tool change height (about .03") This is the difference between the v flange groove of the tool and the v location of the arm. You will see this vertical play if you install a tool into the arm when the machine is in e-stop. **Make sure you do not leave the tool there!**

1. Home the machine.
2. Move the Z-axis to the tool change height specified in parameter MC_1130 (Fanuc parameter P1241). In the Fanuc Oi-M push "System" hard key several times until one of the soft keys at the bottom says "Parameter", enter soft key and go to "Parameter (co-ordinates) enter. Type in 1241 and enter, to go to P1241- Tool Change Height is in the Z- Reference Point #2 (typically -6XXXX) negative number always.

The number is derived from the distance from home position (machine zero) to the proper height for tool change.

3. That number is in MM (millimeters) and is a negative value. Change display to read in MM to get a direct read out in the Machine Coordinates box in Z =(ex. -62.408 MM) drop the decimal point when entering the new number. Enter -62408 for this example. Make sure you are in MDI and the key is switched to [0] to enable changes.
4. Orient the spindle with an M19 command.
5. Install a tool in the spindle.
6. Press the middle right solenoid manual button to grab the tool, see the description of manual solenoid operation.
7. Using the hand wheel at its finest setting or jog .001” increments move the Z axis, so the v flange groove of the tool is in the center of the arm v notch. Be careful not to put stress on the ATC arm. This is “play” as described above. This is the correct Z axis tool change position, record the machine coordinate value and retain for entry into parameter MC_1130 (step 8).
8. Press the middle left solenoid manual button to remove the arm from the tool in the spindle. At this time, you can alternate the middle left and middle right button to check for smooth engagement of the arm into and away from the tool. If the arm doesn’t respond smoothly then further Z axis height adjustment may be required.
9. Remove tool from spindle. Update parameter MC_1130 (Fanuc parameter P1241) with the new tool change height as described in step 2 above.

5.8 Recovering from a Tool Change Failure

PROCEDURE TO BE PERFORMED BY QUALIFIED PERSONNEL ONLY

- If the tool changer fails you may get an alarm “timeout in spindle sequence”, this means that after 30 seconds of waiting a function did not get its proper finish signal.
- You must look to see what function did not complete. It most likely had to do with movement of the arm.
- Look at the solenoid valves, the solenoid valve that is illuminated is the operation that failed.
- Press emergency stop.
- If the arm did not complete grabbing the tool, make sure the pot is down and then press the arm return manual button. Refer to manual operation of tool changer pneumatic solenoid valves.
- After the arm is returned to normal resting position, tool is removed from the spindle and carousel pot returned manually, the carousel pots may have to be reset.
- If the carousel does not rotate check the fuses in the electrical cabinet. Refer to electrical schematics in maintenance manual.

5.9 ATC Carousel Home Position and Tool Bin# Reset

To reset all of the tool bin locations, follow this procedure:

- Remove tool from spindle
- In MDI command M6T0, press cycle start
- Remove any tool in spindle
- In MDI command M61, cycle start (this will cause the carousel to index to bin#1)
- Press system hard key
- PMC soft key
- Params soft key
- Data soft key
- Dtbl soft key

- The data table bins 0-24 or the number of carousel positions will have to agree with the proper tool numbers. Make sure there are no duplicates included the number 0
- Remove all tools from the spindle

5.10 Spindle Orient Adjustment

PROCEDURE TO BE PERFORMED BY QUALIFIED PERSONNEL ONLY

This procedure will outline how to adjust the spindle orient position when an **M19** is commanded to perform a tool change. Read all instructions carefully and do not skip steps.

1. With Z axis at maximum positive limit and ATC arm under spindle nose (manual solenoid button 2nd on right). Make sure spindle can be spun without spindle keys hitting ATC arm.
2. Orient spindle with M19.
3. Look to see if spindle keys are in alignment with notch in the arm. Command M5 cycle start. This will turn off the orient command. Fanuc machines you will have to change the orient position parameter P4031.
4. Repeat steps 2 and 3 and change P4031.

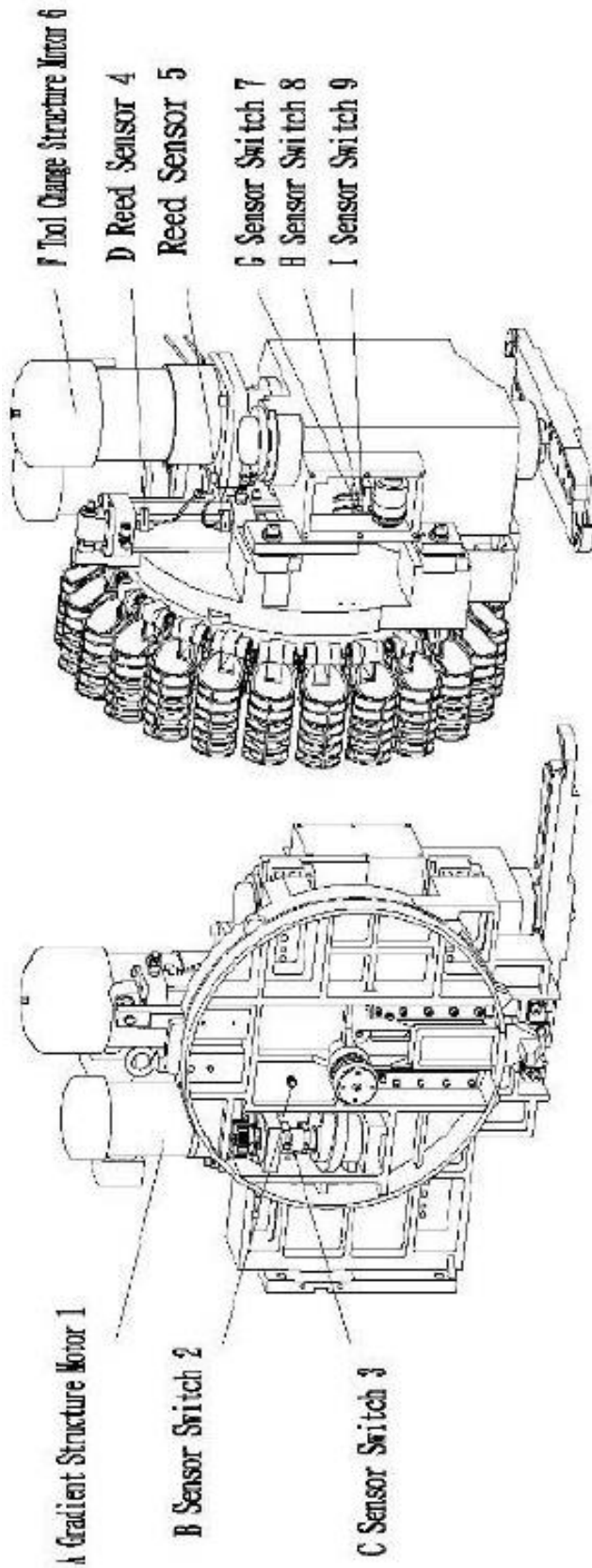
5.11 Arm Alignment

PROCEDURE TO BE PERFORMED BY QUALIFIED PERSONNEL ONLY

If the arm no longer moves in the proper angular alignment an adjustment may be required. The arm is held in place on the arm shaft with a compression clamp. In order to adjust this, follow this procedure:

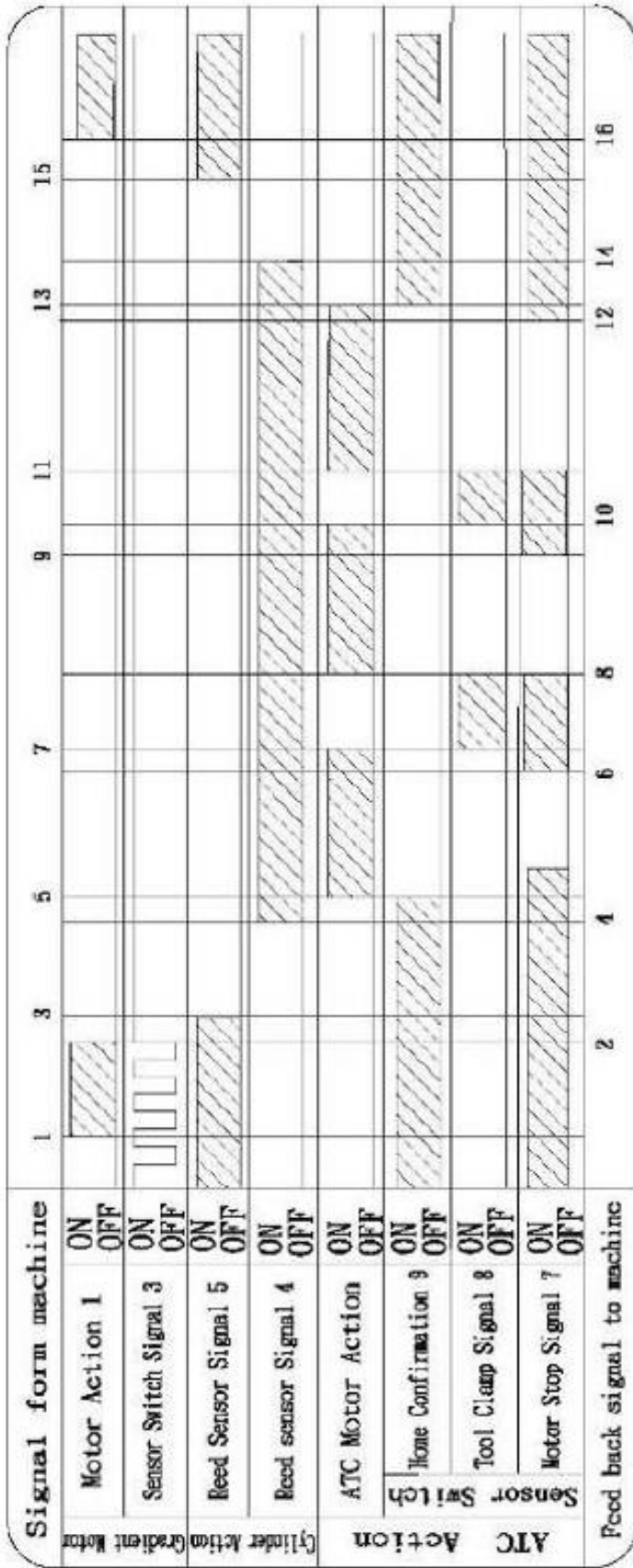
1. Install tool in spindle
2. Orient spindle **M19**
3. Install tool in carousel pot
4. Drop carousel pot down with manual button(top right)
5. Move Z axis to tool change height
6. Move arm to grab tools with manual button.(middle right)
7. Loosen socket head cap screws at bottom center of arm and align arm to grab tools fully. Once completed adjustment tighten screws.
8. Move arm back to origin location with manual button (middle left)
9. Remove tools
10. Reset carousel pot back up with manual button. (top left)
11. Turn off orient with **M5** command

5.12 ELECTRIC ARM TYPE ATC – CONTROL ELEMENT POSITION EXPLANATION DRAWING



NO	CONTROL ELEMENT	FUNCTION	SPECIFICATION	DISK	QTY	REMARK
A	Gradient Structure Motor 1	Control tool disk position reverse turn	1/4HP*4P	TYPE 40-2-4DV	1	3Ø220V/60 HZ
B	Proximity Sensor 2	Tool charge structure's origin point number one tool signal	Balluff PSC405-3V00-1002		1	Ø12 DC24V(PNP)
C	Sensor Switch 3	Stop signal of disk gradient motor	Balluff PSC405-3V00-1002		1	Ø12 DC24V(PNP)
D	Reed Sensor 4	Positioning signal of tool dropping (contracting of cylinder)	LSD-82		1	CC34V
E	Reed Sensor 5	Positioning signal of tool receiving (protruding of cylinder)	LSD-82		1	CC34V
F	Tool Change Structure Motor 6	Tool charge structure's power source	3/4 HP*4P		1	3Ø220V/60 HZ
G	Proximity Sensor 7	Stop signal of motor (tool change)	GMIRON EZE-CF881		1	Ø4 DC24V(PNP NC)
H	Proximity Sensor 8	Tool clamp signal (tool change)	GMIRON EZE-CF881		1	Ø4 DC24V(PNP NC)
I	Proximity Sensor 9	Origin point confirmation signal (tool change)	GMIRON EZE-CF881		1	Ø4 DC24V(PNP NC)

5.13 ELECTRIC ARM TYPE ATC – SEQUENCE DIAGRAM OF ELECTRIC ACTION



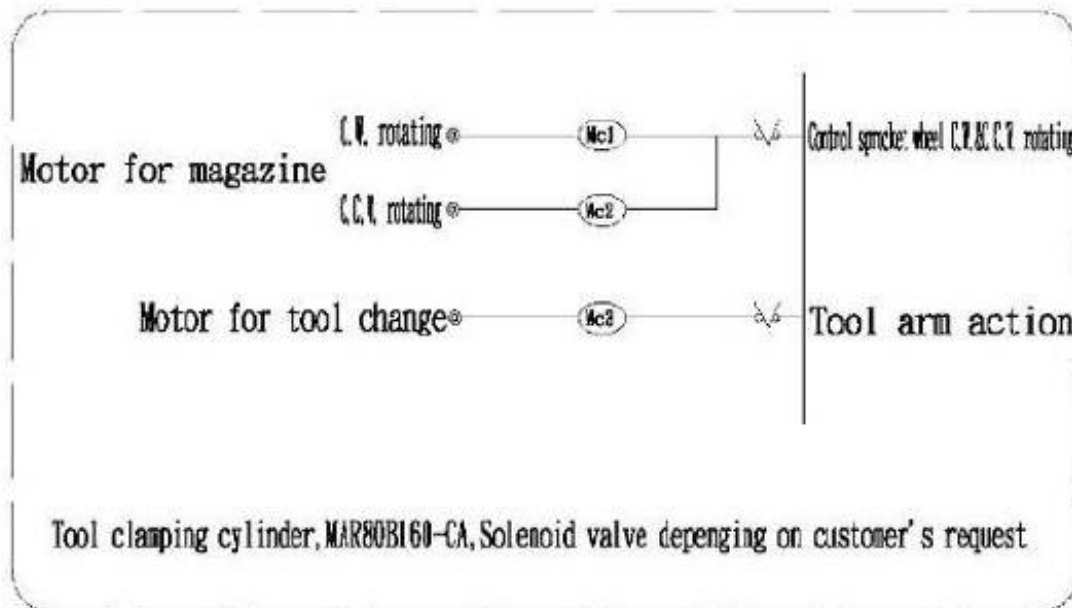
- 1 Tool selection (Tool selection power (TCW) or CCW)
- 2 Tool counter and positioning signal (to stop indexing motor)
- 3 Position for tool set up/down
- 4 Positioning signal of tool falling (contracting of cylinder)
- 5 Tool change motor start from home
- 6 ATC motor start to stop
- 7 Tool clamping confirmation, tool release signal, motor stop
- 8 Tool release finish, motor power on
- 9 ATC index start to stop
- 10 Tool change confirmation, tool clamping signal, motor stop
- 11 Motor power on, index start to home position
- 12 ATC motor start to stop
- 13 Motor stop & hold in confirmation
- 14 Retruding of cylinder starts to position, tool pot home position
- 15 Retruding of cylinder position B signal (Tool change finish)
- 16 Indexing motor rotating to new order - pot

5.14 ELECTRIC ARM TYPE ATC – CONTROL CIRCUIT REFERENCE DIAGRAM

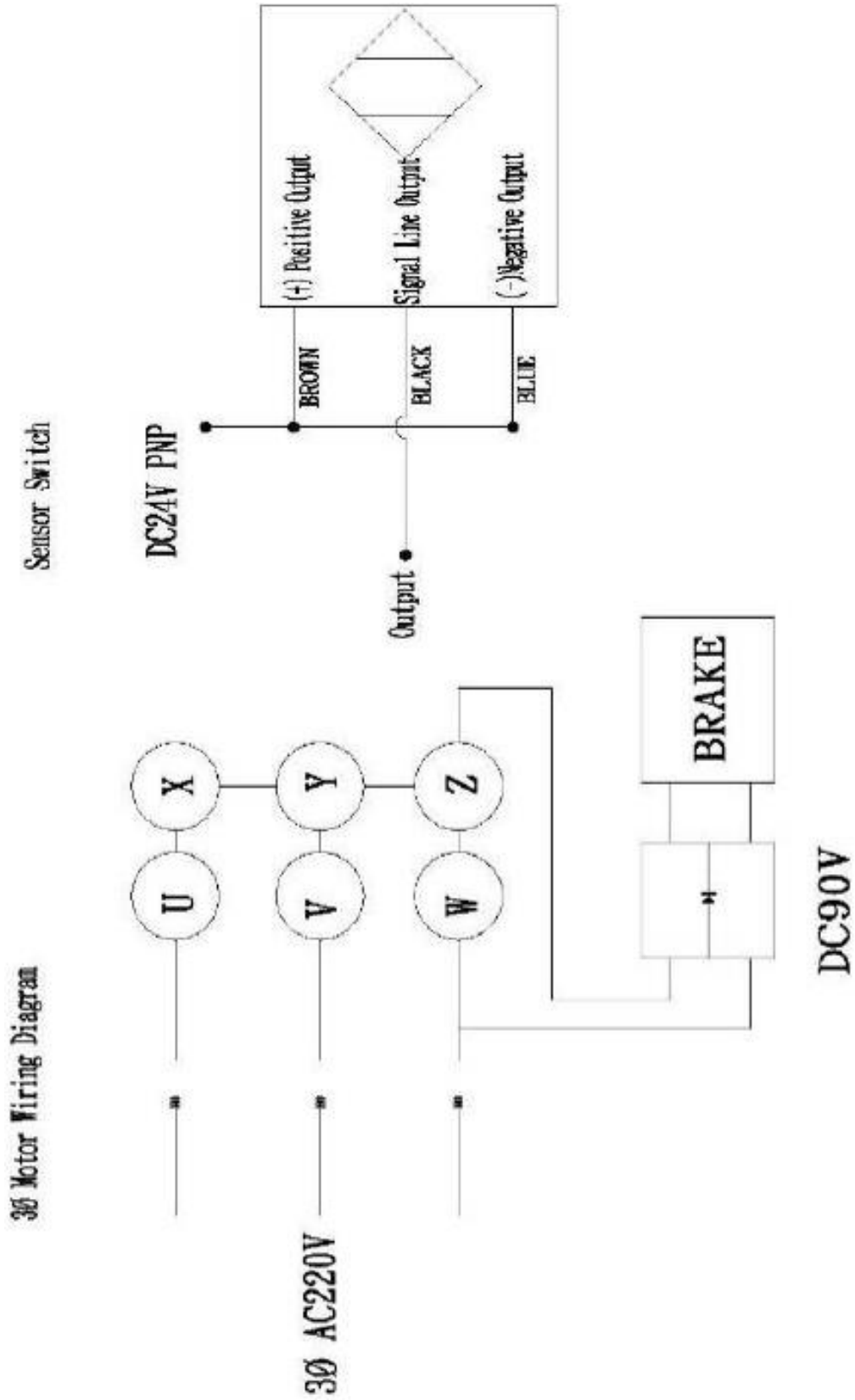
Voltage DC24V(Please choose positive or negative output voltage by PNP or NPN)



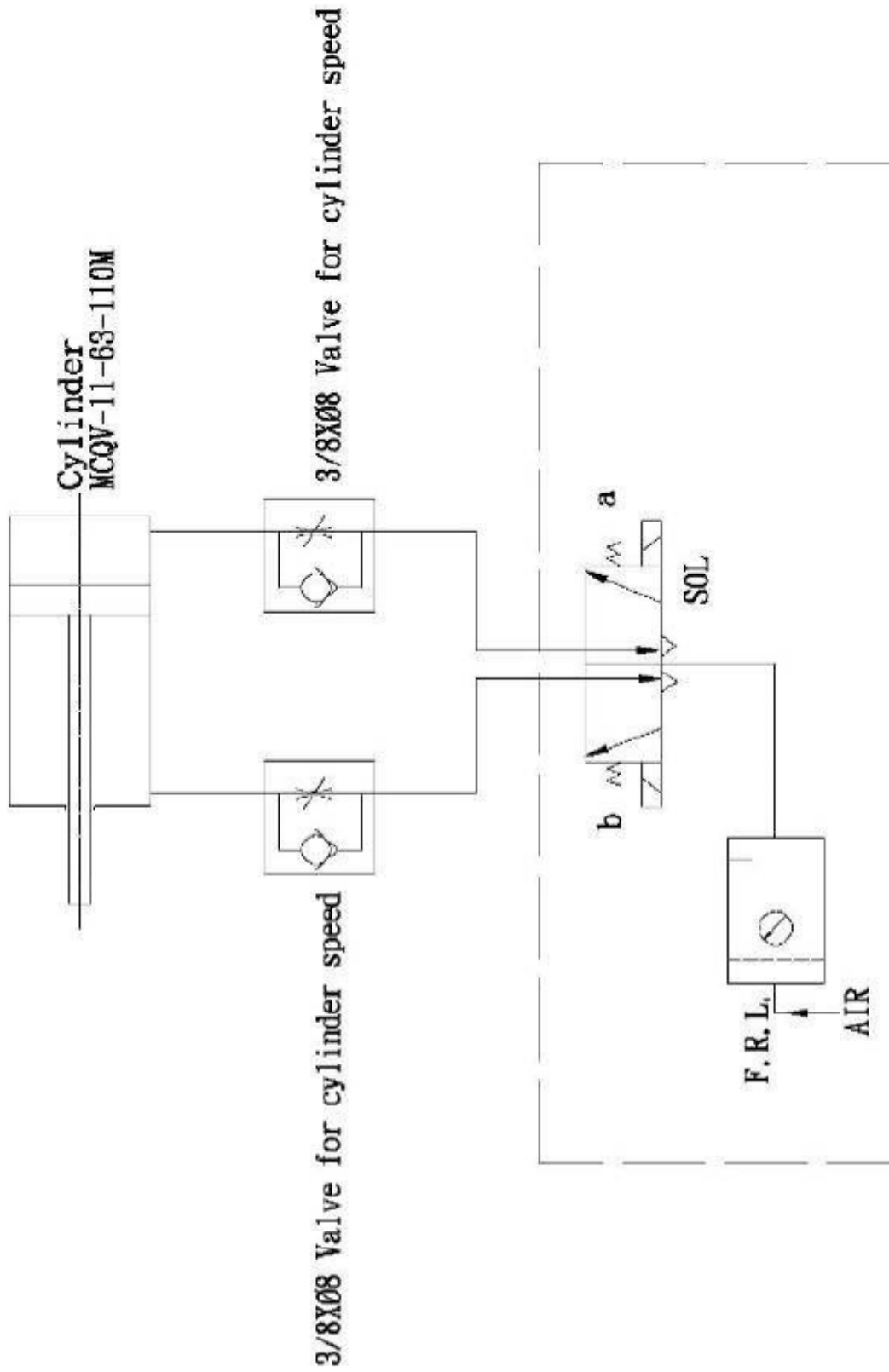
Voltage 220V 60HZ DC24V



5.15 ELECTRIC ARM TYPE ATC – MOTOR & SWITCH WIRING DIAGRAM

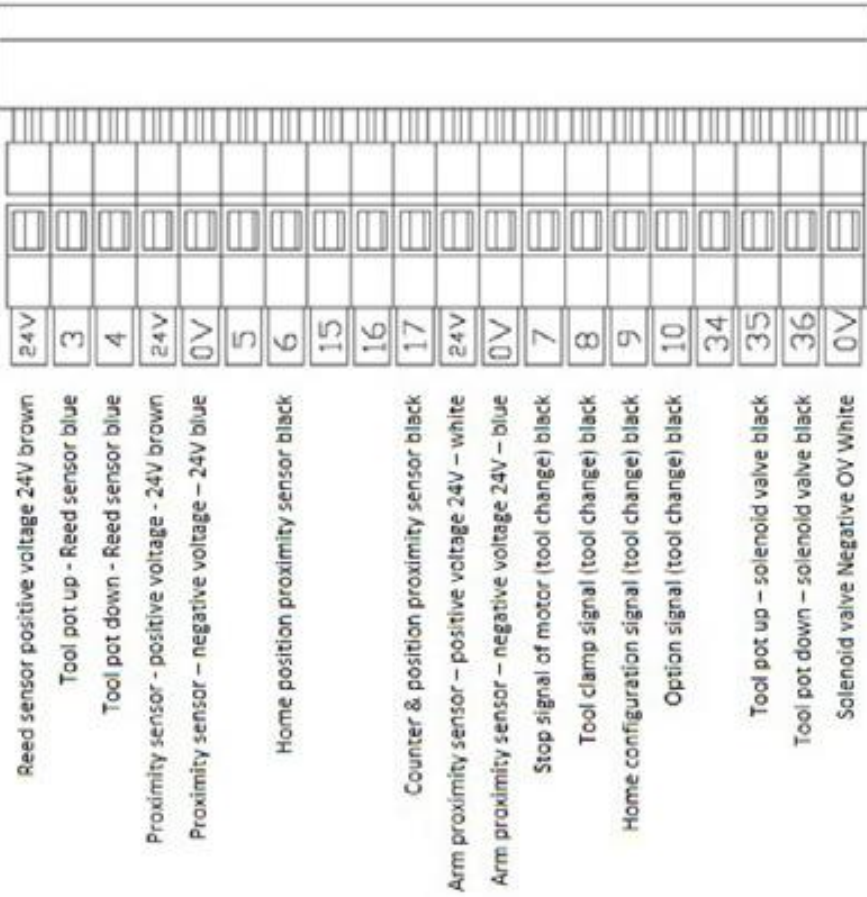


5.16 ELECTRIC ARM TYPE ATC – AIR PRESSURE SWITCH WIRING DIAGRAM



The solenoid valve shown within the dotted lines is shown for reference only and is not included as a standard accessory.

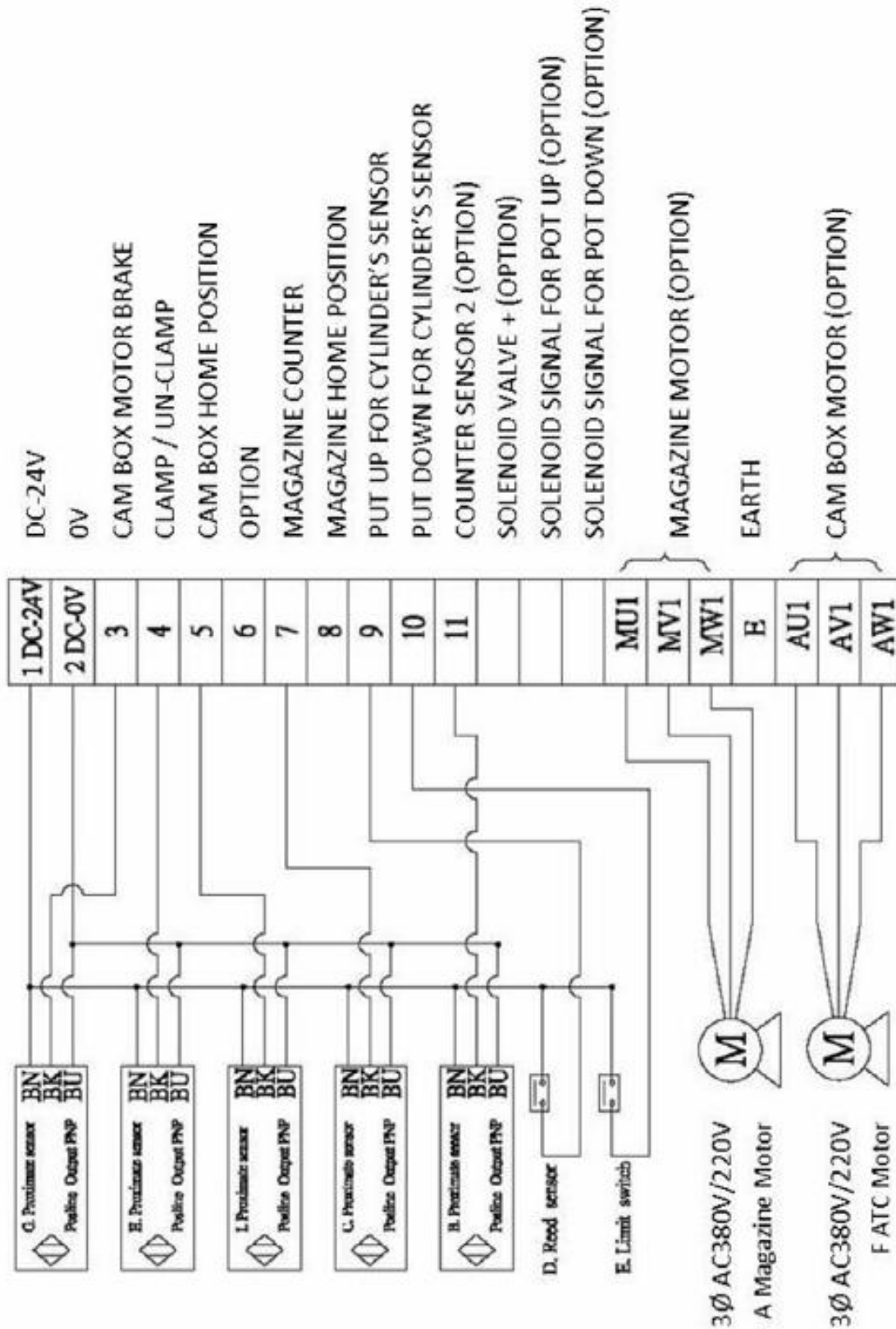
5.17 ELECTRIC ARM TYPE ATC – WIRE JUNCTION BOX DRAWING



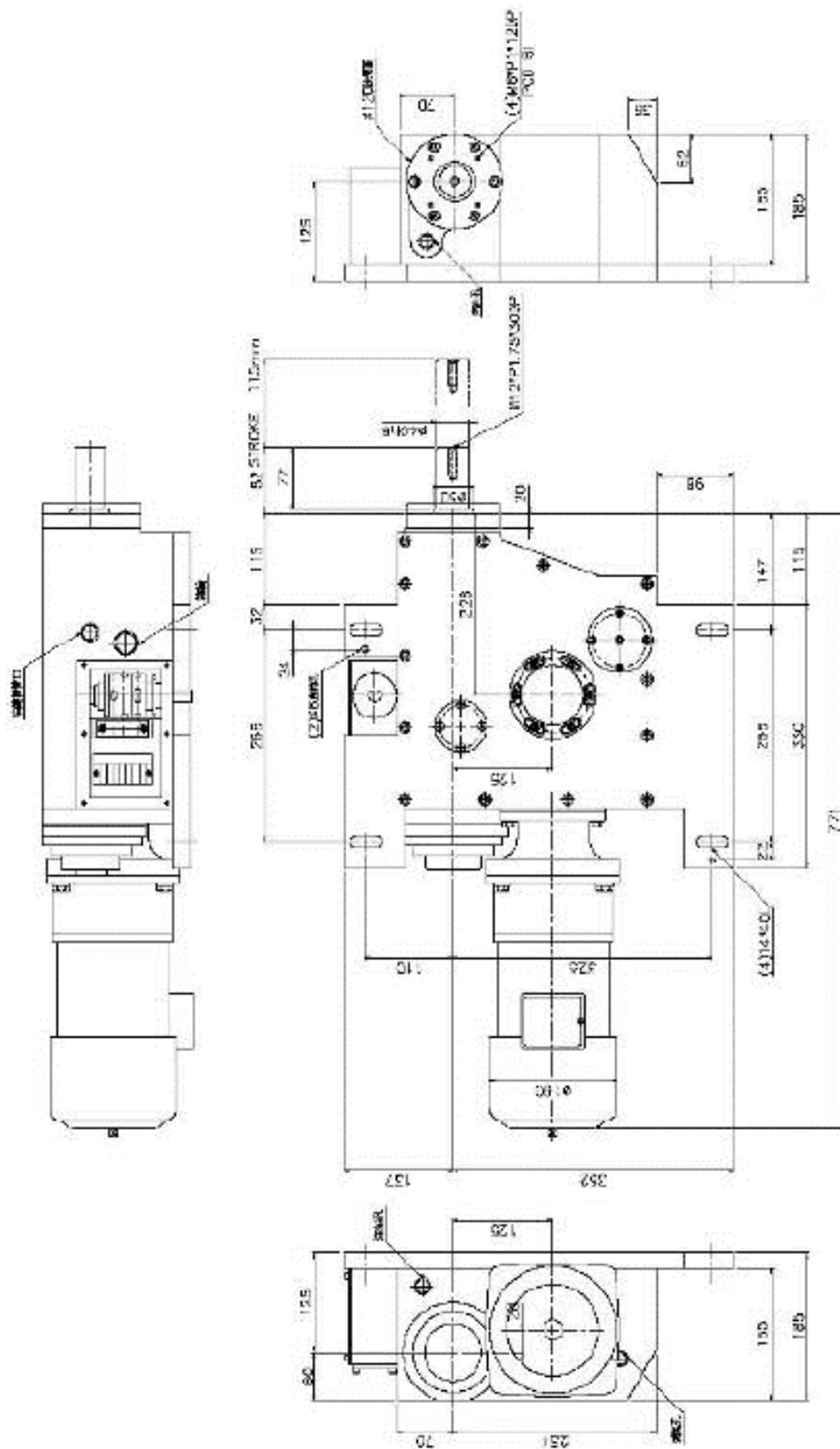
CONNECTOR WAGO231-612

CONNECTOR WAGO231-620

5.18 ELECTRIC ARM TYPE ATC – WIRE BOX DRAWING

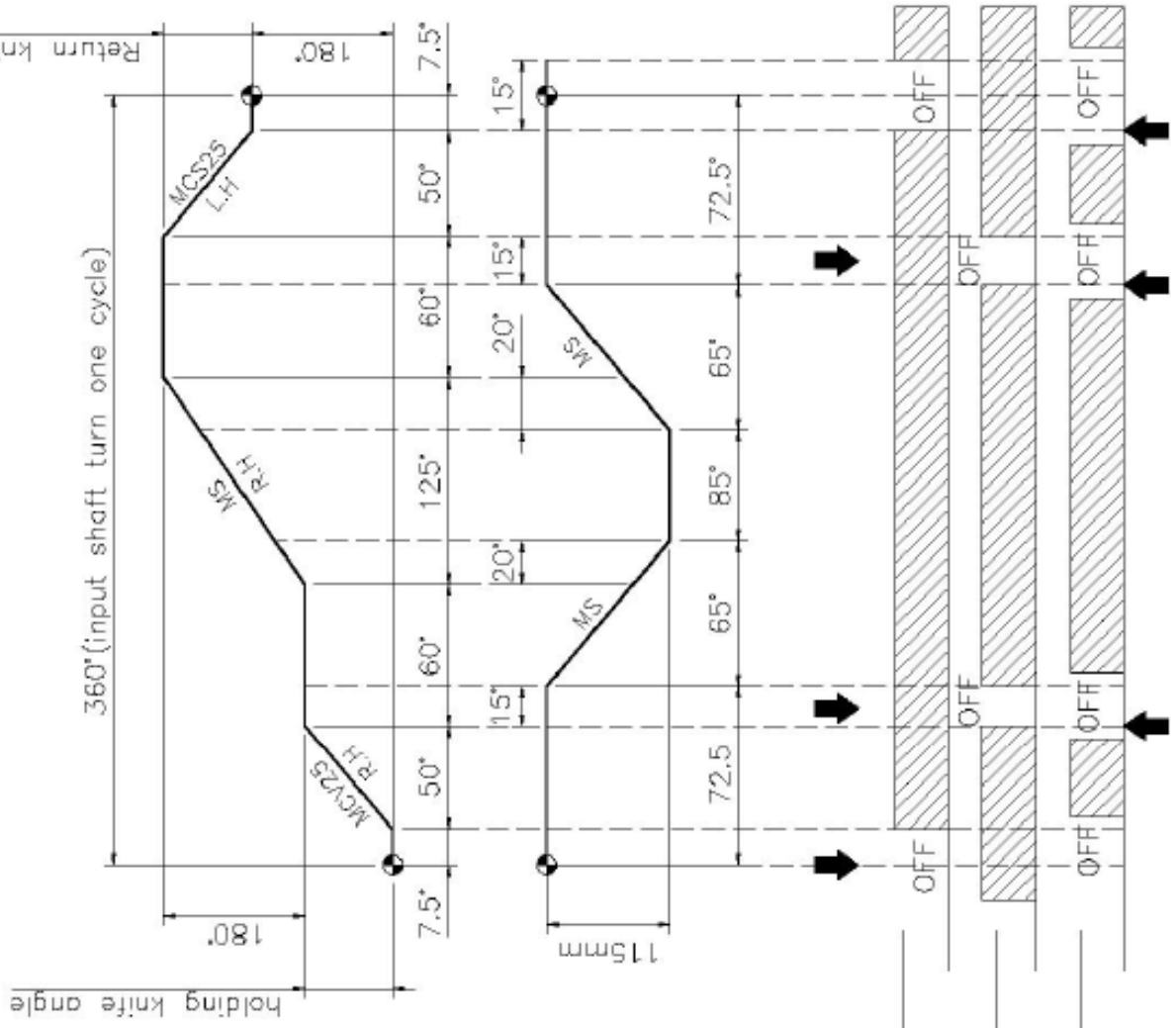


5.19 ELECTRIC ARM TYPE ATC - MAIN ASSEMBLY DIMENSIONAL DRAWING



CAM DEGREE	65°
UP-DOWN STROKE	115mm
SIGNAL SPEC.	PNP*4-φ4
TOOL CHANGE TIME	50/12=1.5sec
	60Hz=1.2sec
MOTOR SPEC.	1/2HP
	BREAK DC-90V GEAR RATIO 1:8

DEX-2 TIME CHART



*ATC time chart

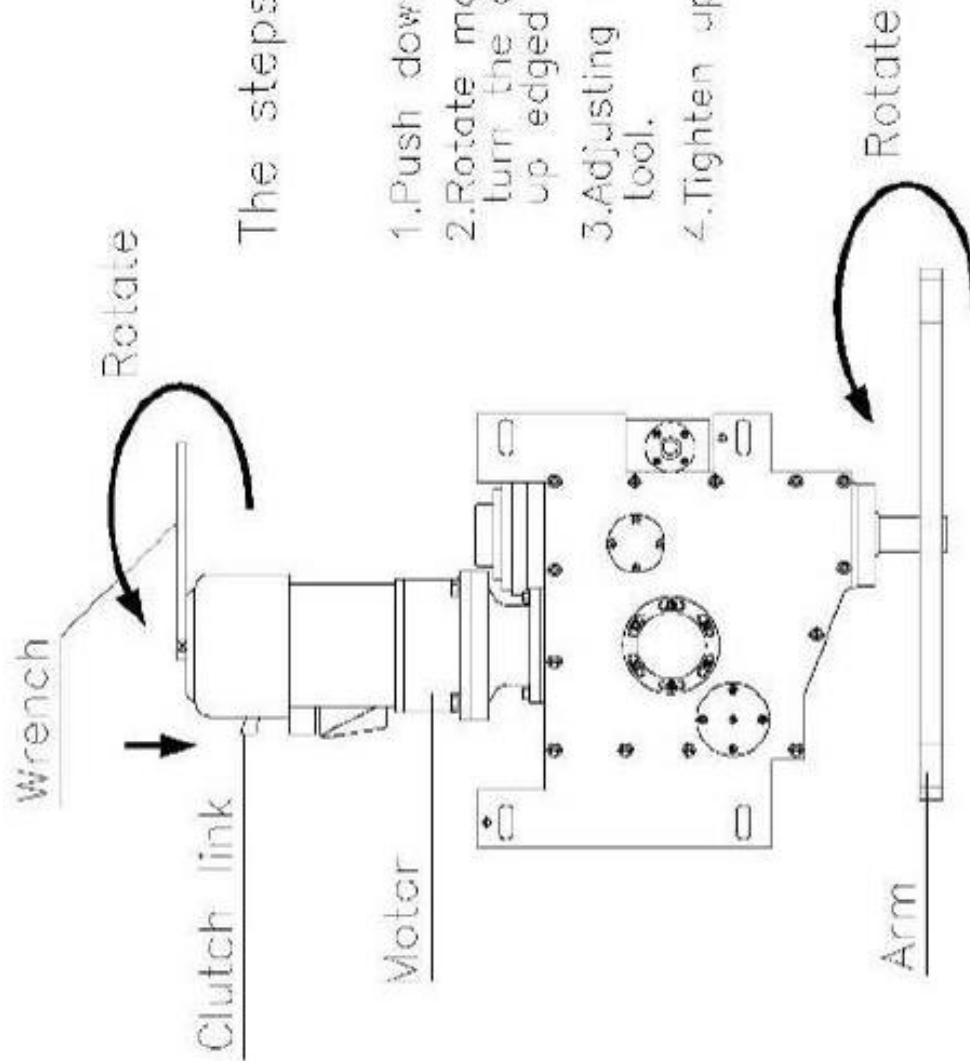
*raising stroke

*original position confirmation

*holding knife angle confirmation

*for brake

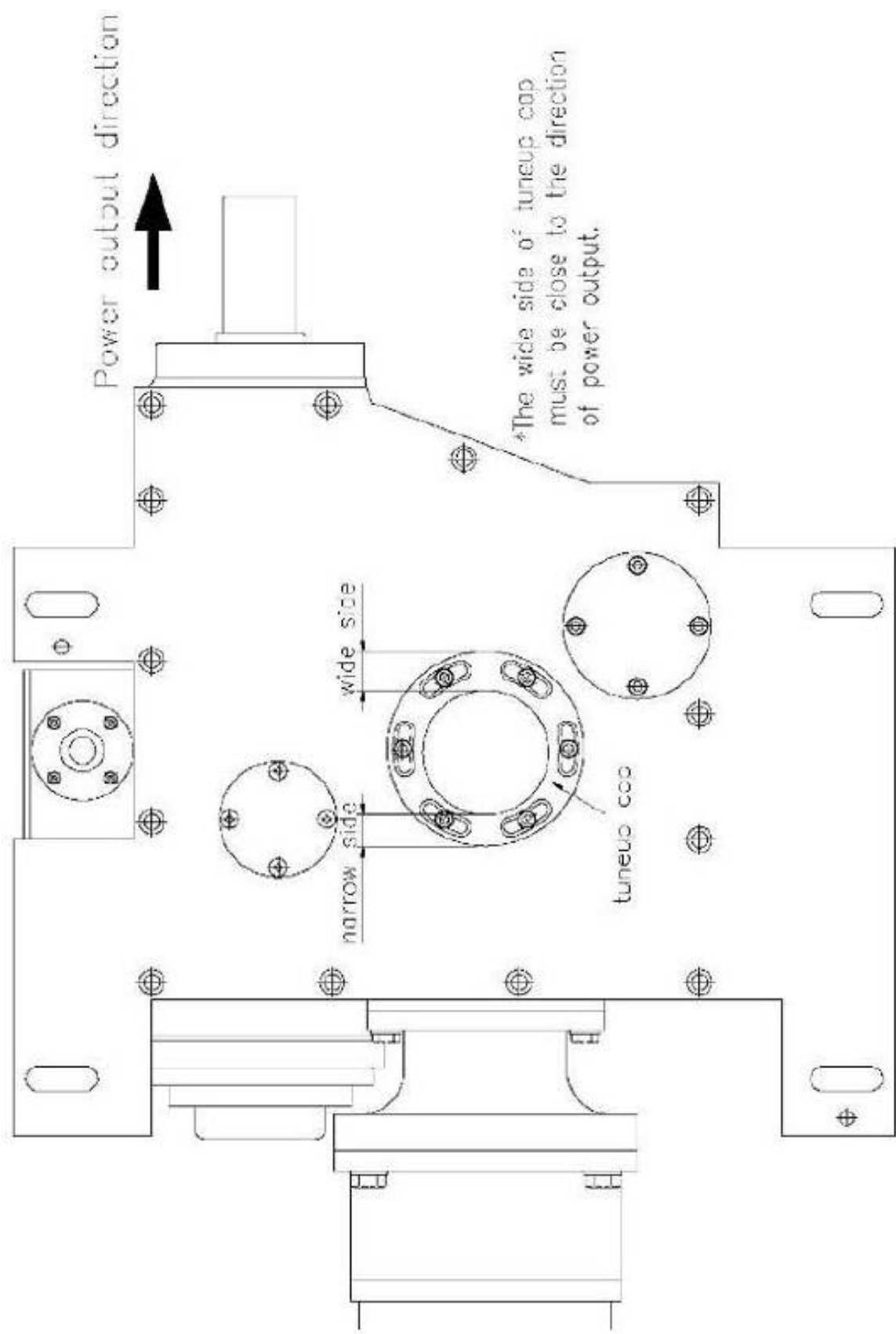
5.21 ELECTRIC ARM TYPE ATC - ADJUSTMENT OF ARM



The steps of arm adjustment

1. Push down clutch link.
2. Rotate motor by using the wrench and turn the arm to the angle of setting up edged tool.
3. Adjusting the arm to hold the edged tool.
4. Tighten up the setup screws.

5.22 ELECTRIC ARM TYPE ATC - POWER OUTPUT DIRECTION DIAGRAM



5.23 ELECTRIC ARM TYPE ATC – GEAR OIL SPECIFICATIONS

BRAND NAME	SPEC(VISCOSITY GAGE ISO VG)
SHELL	Omala EP 150-220
TOTAL	Garter EP 150-220
MOBLE	Mobil gear 150-220
ESSO	Spartan EP 150-220
CASTROL	ALPHA SP(EP) 150-220
CPC	85W/90

NOTES:

1. Check oil level before running equipment
2. Change oil after 2,400 hours of use
3. Use new oil with the proper viscosity

5.24 ELECTRIC ARM TYPE ATC – REPAIR PROCEDURES

1. To dismantle and reinstall the splined output shaft:
 - Turn to origin position, remove the taper pin (246) and M8 bolt (227) on the case cap.
 - Remove the case cap (101B).
 - Loosen hexagonal screw (225) and remove the front fix cap (111).
 - Remove the splined output shaft (106), and transmit wheel (107), suns nut (208) suns gasket (210) and remove the shaft.
 - Reassemble in reverse order.
2. To change the bearings on bearing tube :
 - Turn to origin position, remove the case cap of taper pin (246) and M8 bolt (227) on the case cap.
 - Remove the case cap (101B).
 - Rotate the bearings tube (108) to the standby position.
 - Remove the side set screw (233).
 - Use the special tool to remove the bearings 4)20 (134), reinstall the new bearings, use the no air rubber to fastener the settled screw (233).
 - Reassemble in reverse order.
3. To take rocker apart :
 - Turn to origin position, remove the case cap of taper pin (246) and M8 bolt (227).
 - Remove the case cap (101B)
 - Then remove the rocker of settled screw down (224)
 - Use the teardown tool, removed the rocker shaft (116)
 - Remove the thrust bearings AXK1108 (206), thrust bearing pad AS1108 (227) and needle bearings HK3516 (205).
 - The needle bearings 4)22(135) and needle bearings 4)24(136) taken apart the rocker is now replaced new product.
 - Reassemble in reverse order.

5.25 ATC TROUBLESHOOTING

Condition	Reason	Trouble Shooting
Tool disk stops in mid position.	<ol style="list-style-type: none"> 1.Brake failed to work or was overloaded 2.Carousel count proximity switch too far from target. 	<ol style="list-style-type: none"> 1. Check that the electronic brake wiring is correct. If part failed to work 2. Move sensor switch closer to target
Tool disk rotates continuously.	<ol style="list-style-type: none"> 1.Counting sensor switch failed. 2. Carousel count proximity switch too far from target. 	<ol style="list-style-type: none"> 1. Replace sensor switch 2. Move sensor switch closer to target.
Tool pot broken.	<ol style="list-style-type: none"> 1. Tool disk rotated while tool pot down 2. Tool arm out of adjustment 	<ol style="list-style-type: none"> 1. Check operation of tool pot up/down proximity switches. 2. Adjust tool arm position.
Tool disk stuck.	Tool disk rotated while tool pot down	<ol style="list-style-type: none"> 1. Check operation of tool pot up/down proximity switches.
Vibration during arm movement.	<ol style="list-style-type: none"> 1.Oil level low. 2.Cylinder speed out of balance. 	<ol style="list-style-type: none"> 1. Fill lubricant oil. 2. Adjust cylinder pressure & speed with throttle valve.
Tool disk does not work during tool selection.	<ol style="list-style-type: none"> 1. Induction switch does not work. 2. Reed switch broken. 3. Motor failure. 4. Electronic connection open. 5. Fuse opened. 	<ol style="list-style-type: none"> 1. Adjust reed switch to normal position. 2. Replace reed switch. 3. Repair/replace motor. 4. Check wiring & repair. 5. Check sensor switch. 6. Replace fuse.
Cylinder does not work during tool change.	<ol style="list-style-type: none"> 1. Proximity switch for tool counter positioning broken. 2. Tool disk not in position. 3. Cylinder has no air. 4. ATC arm is not at origin position. 	<ol style="list-style-type: none"> 1. Replace proximity switch. 2. Check tool disk positioning. 3. Check air cylinder by manually operating solenoid valve. 4. Rotate motor manually to put ATC arm back to original position.
ATC motor over-heat	<ol style="list-style-type: none"> 1. Break not working. 2. Motor short circuit. 	<ol style="list-style-type: none"> 1. Replace the brake. 2. Replace the motor.
<p>ATC arm fails to move after tool is clamped.</p> <p>ATC fail to work after 180° degrees tool change.</p> <p>ATC home stop & home sensor switch do not work.</p>	<ol style="list-style-type: none"> 1. Proximity switch is in wrong position. 2. Proximity switch is broken. 	<ol style="list-style-type: none"> 1. Adjust proximity switch. 2. Replace proximity switch.
ATC arm stops out of position.	<ol style="list-style-type: none"> 1. Proximity switch is in wrong position. 2. Positioning ring of proximity switch is at wrong angle 	<ol style="list-style-type: none"> 1. Adjust 3 switches at the same time to proper angle. 2. Rotate set ring, adjust 3 proximity switches to proper angle.
ATC tool arm not fully engaging tools.	ATC arm not aligned.	Loosen arm & align it.

5.26 ATC MAINTENANCE

5.27 TOOL POT REPLACEMENT PROCEDURE

1. Remove the 2 carousel covers as shown.



2. Remove the 8mm bolt and loosen but do not remove the 10mm bolt on the shaft cover. (Note: do not remove the 4 attachment bolts)



3. Pull out the plate to the M10 screw bolt position as shown.

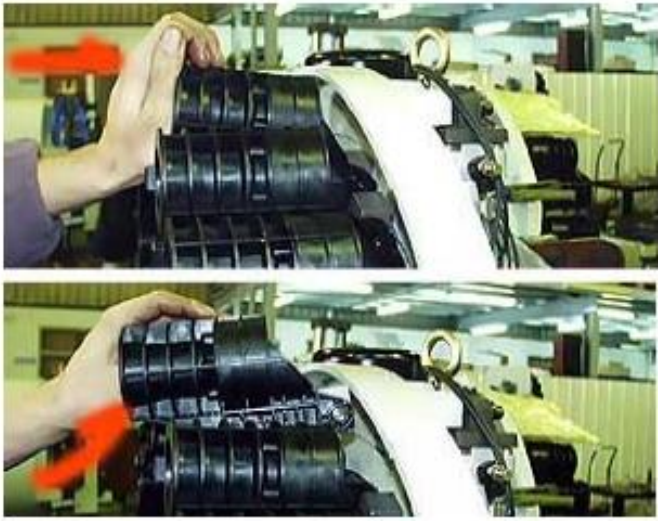


4. Remove the 6mm bolt next to the tool pot as shown.



5.27 TOOL POT REPLACEMENT PROCEDURE (CONTINUED)

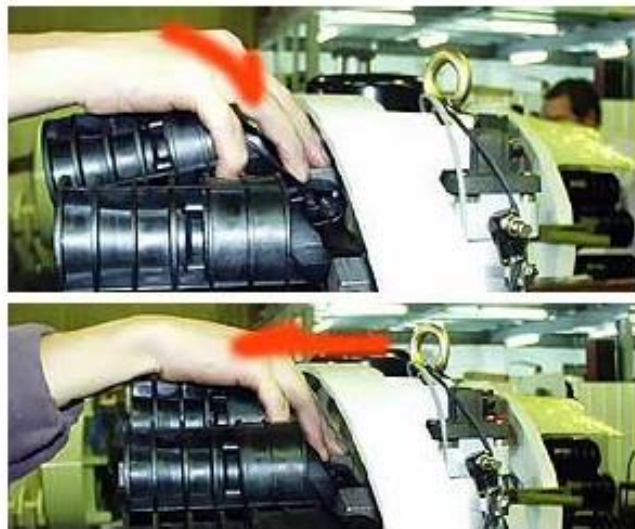
5. Remove the broken pot by pushing the pot forward, rotating it upward, then extract it.



6. Confirm the attachment bolt and knob are correct by comparing to broken pot.



7. Install the new pot in reverse order of step 5.



8. Replace the 6mm bolt next to the tool pot as shown.



5.27 TOOL POT REPLACEMENT PROCEDURE (CONTINUED)

9. Push the plate to the original position and replace/tighten the screws



10. Check that the tool disk is fully seated so it does not move in/out.



11 Check that the tool pot drops at the correct 90 degree angle by manually operating solenoid valve.



5.28 REPLACE ATC MAGAZINE MOTOR

1. Turn power off.
2. Disconnect the wires for the magazine motor in the junction box.
3. Remove the M8 bolts (4pcs) on motor seat, and then remove the motor.
4. Remove the S18 ring & M6 bolt from the damaged motor & install the parts on the new motor.
5. Please make sure the motor specification is correct before you replace it.
6. Reconnect the wires in the junction box.

5.29 REPLACE ARM MOTOR

1. Power off.
2. Disconnect the wires for the arm motor in the junction box.
3. Remove the M10 bolts (4pcs) on motor seat, and then the motor.
4. Please make sure the motor specification is correct before you replace it.
5. Reconnect the wires in the junction box.

5.30 CYLINDER REPLACEMENT

1. Turn off the power & cylinder air pressure source.
2. Take off 08 air pipe.
3. Take off induction switch & mark original position before removing it.
4. Remove the M8 bolt on the cylinder and the S12 ring on joint "I".
5. Make sure to the cylinder specifications are correct before you install. Install the induction switch to the original position.

5.31 INDUCTION SWITCH REPLACEMENT

1. Power off.
2. Disconnect the wires for the induction switches in the junction box.
3. Please loosen the seat of reed switch & take it out.
4. Replace new part & take care of the sensor position, push it to upward & downward until to end of both sides.
5. Follow the steps to set up wires in electric box.

5.32 REPLACING THE PROXIMITY SWITCH FOR THE TOOL MAGAZINE

1. Power off.
2. Disconnect the wires for the induction switches in the junction box.
3. Remove the front cover & outer metal cover.
4. Remove the M12 bolt on the proximity switch.
5. Replace the switches & make sure the gap distance is 4 mm.
6. Reconnect the wires in the junction box.

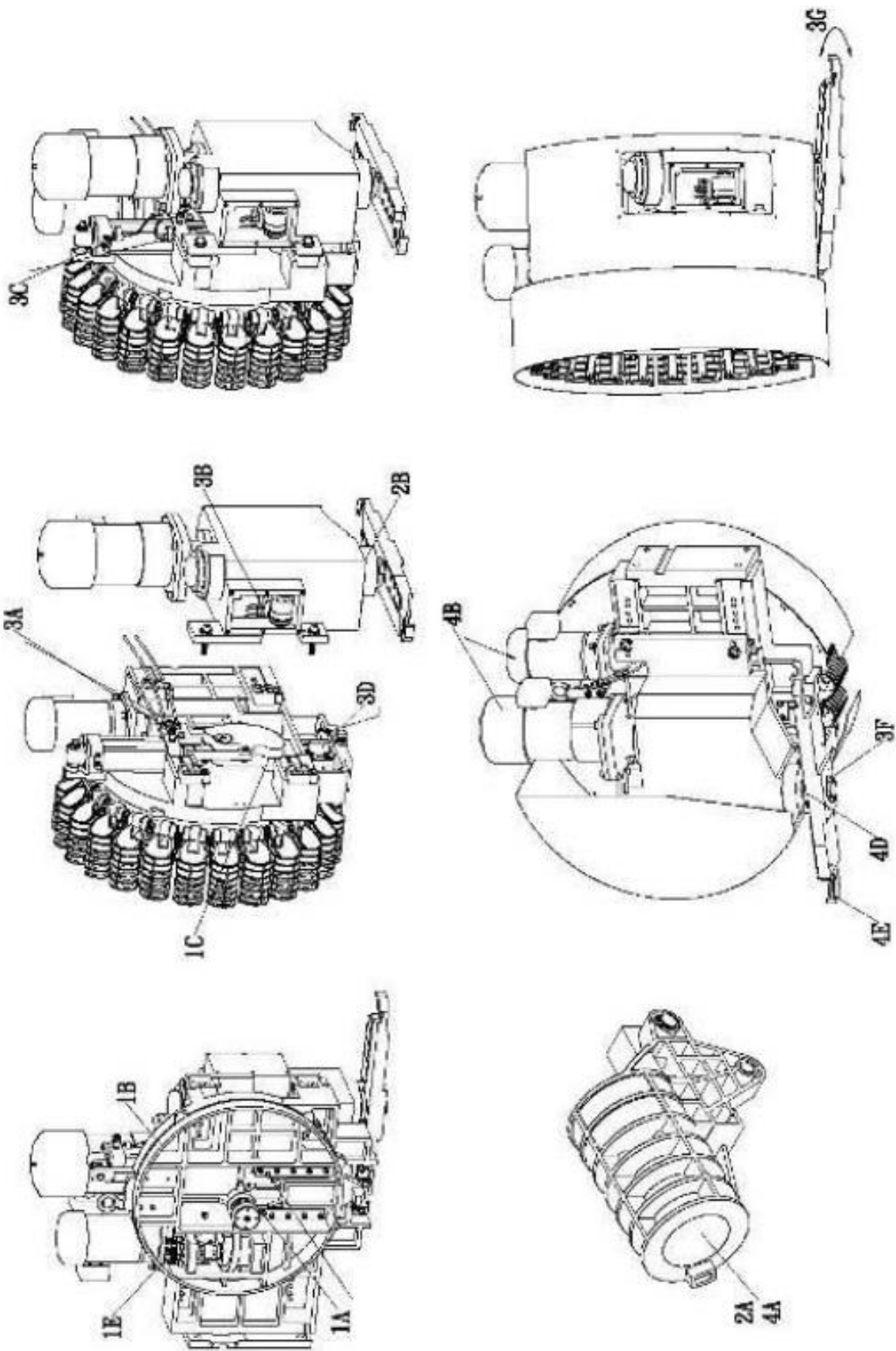
5.33 REPLACING THE PROXIMITY SWITCH FOR THE ARM

1. Power off.
2. Disconnect the wires for the induction switches in the junction box.
3. Remove the acrylic cover plate.
4. Replace the switch & make sure the gap distance is 4 mm.
5. Reconnect the wires in the junction box.

5.34 NOTES

1. Be sure to use the proper tools during maintenance & repair.
2. Take care to match the part specifications before replacement. Specifications are listed in the parts list.
3. Make sure the gap for the proximity switch & reed switch 4 mm.
4. Be sure to note the wire numbers & locations before disconnecting.

5.35 ATC MAGAZINE MAINTENANCE POINTS

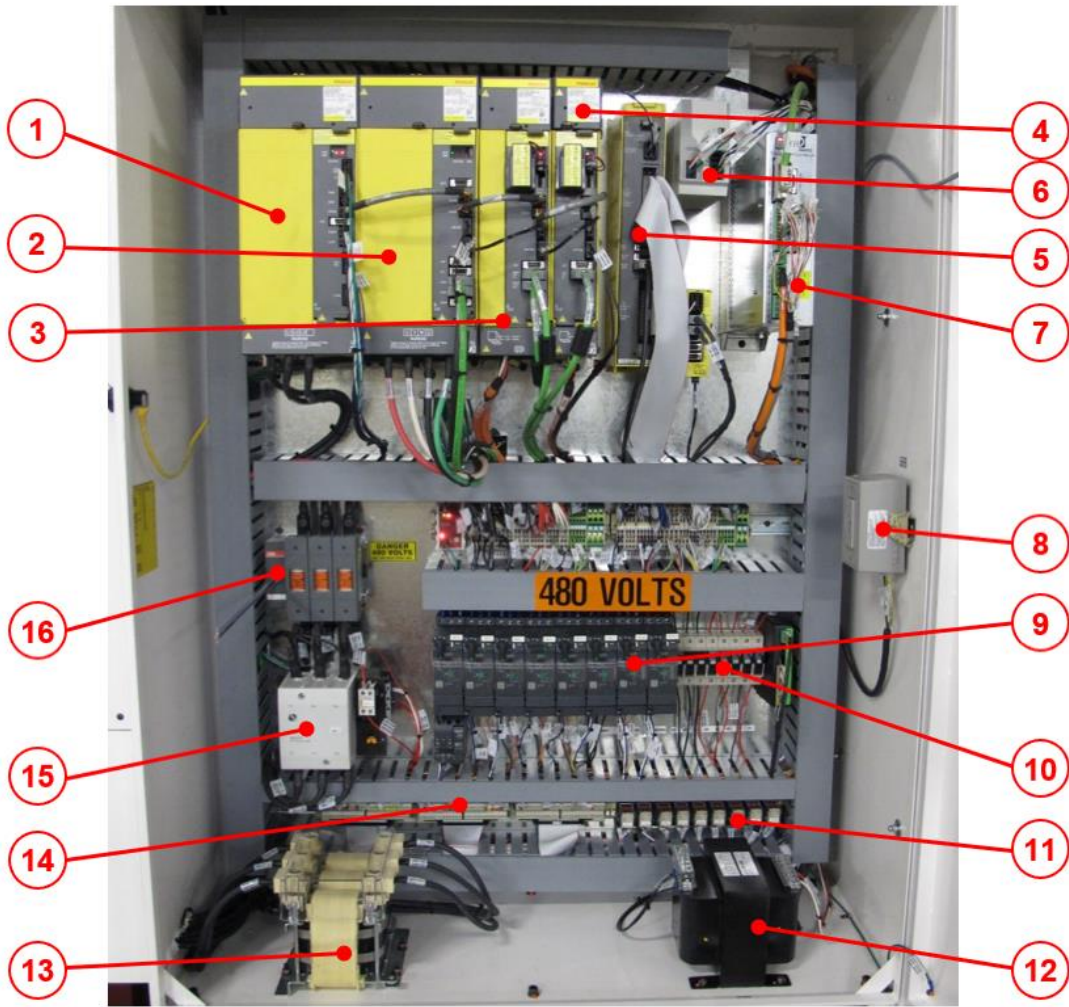


5.35 ATC MAGAZINE MAINTENANCE POINTS (CONTINUED)

G. Magazine maintenance main points												
1	Lubri- cation	A	Carousel pot guideway	Take off number cover, fill oil manually	Grease Gun	Half year	Grease					
		B	Pot slide	Take off sheet metal, fill	Grease Gun		Grease					
		C	Arm slide block & position pin	Take off sheet metal cover, clean & fill oil manually			Grease					
		D	Cam Slide	Take off ATC cover, fill lubrication oil manually	Grease Gun		Grease					
		E	Motor Gear	Take off front cover & outer sheet	Grease Gun		Grease					
2	Cleaning	A	Inner taper face of pot	Clean pot		Once a month						
		B	Change ATC oil	Drain the old oil, and fill			SHELL TELLUS 32					
3	Loosen Check	A	Sensor switch for magazine	Check manually		Half year						
		B	Sensor switch for ATC	Check manually								
		C	Sensor switch for cylinder	Check manually								
		D	Limit switch	Check manually & optically								
		E	Bolts	Check manually								
		F	Bolts on arm	Check manually								
		G	Shake the arm to decide if backlashes too high	Check manually & inaccuracy can't								
		H	Check the carousel body	Check manually								
		I	Check tool magazine	Check manually								
		4	Other check	A	Pot ball is falling down		Check manually					
				B	Excessive noise or heat from motor		Check manually					
C	Check the air pressure for the cylinder solenoid valve			Check manually								
D	Oil leak from ATC output shaft			Check manually								
E	V shape flange of ATC arm to wear and tear			Check manually								
F	The oil level lower of ATC oil tank			Check manually			Before power					

6.0 – DRAWINGS AND PARTS LIST PARTS

6.1 FANUC CONTROL ELECTRICAL PANEL LAYOUT & PARTS LIST



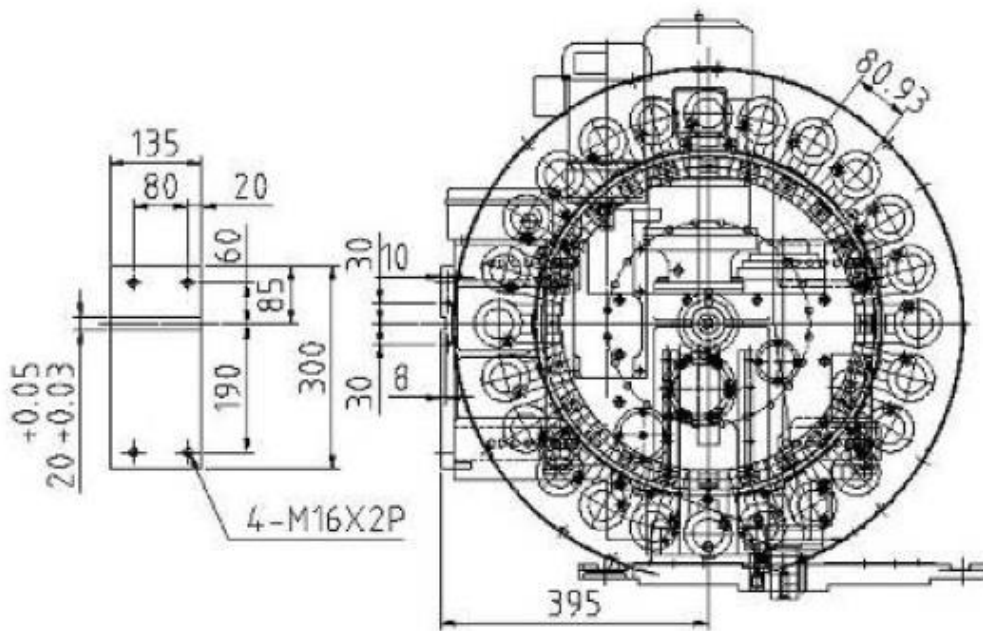
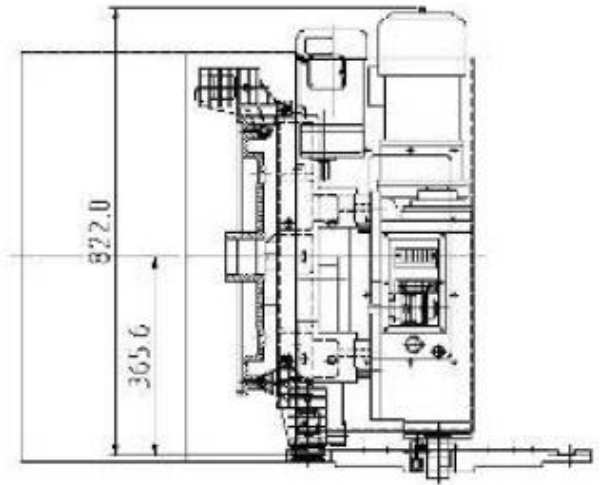
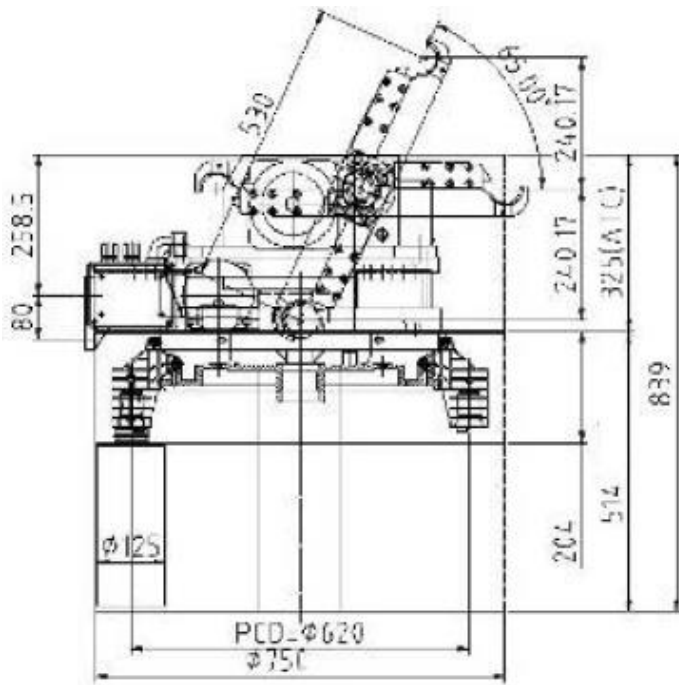
REF	PART NO.	DESCRIPTION	QTY
1	A06B-6252-H045	FANUC POWER SUPPLY	1
2	A06B-6272-H045#H610	FANUC SPINDLE DRIVE	1
3	A06B-6290-H209	FANUC DOUBLE AXIS DRIVE	1
4	A06B-6290-H125	FANUC SINGLE AXIS DRIVE	1
5	A16B-2204-0240/10A	FANUC I/O BOARD	1
6	MSE-2946	POWER SUPPLY 20 AMP	1
7	TMC-14-400-8-20-5.0/11	DUPLOMATIC TORQUE MOTOR CONTROLLER	1
8		110 VOLT POWER OUTLET	1
9	MSE-6620	CONTACTOR	1
10	MSE-6549	SINGLE POLE FUSE HOLDER	1
11	MSE-1185 / MSE-1195	RELAY & BASE	1
12	MSE-1610	3 / 4 KVA TRANSFORMER	1
13	A81L-0001-0191	FANUC REACTOR	1
14	MSE-1330	TERMINAL BLOCK	1
15	MSE-1403	MAIN CONTACTOR	1
16	SWT-5106	DISCONNECT SWITCH	1

6.2 FANUC FRONT CONSOLE LAYOUT & PARTS LIST

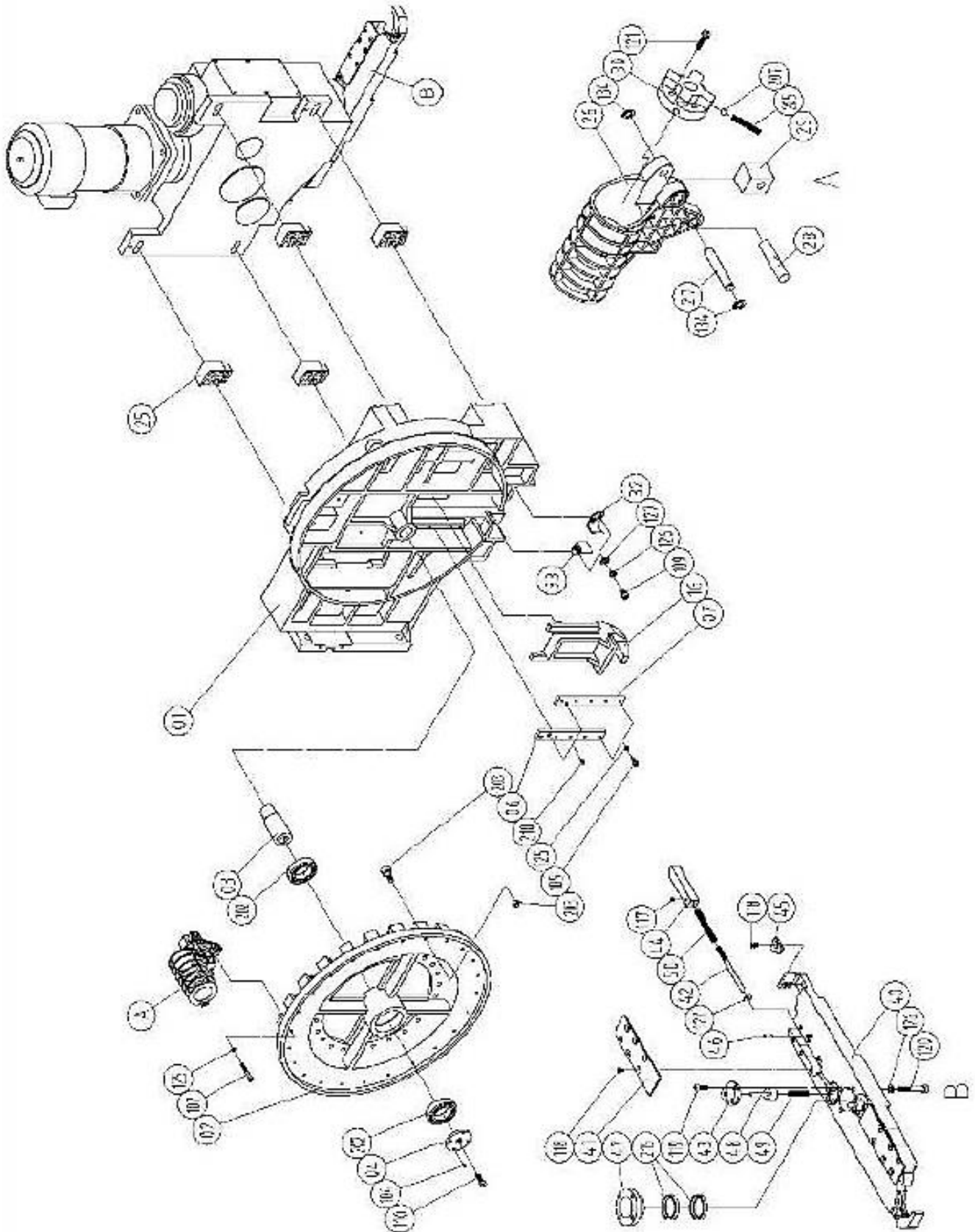


REF	PART NO.	DESCRIPTION	QTY
1	A02B-0338-H140	Oi-F 10.4" COLOR LCD UNIT	1
2	A02B-0323-C125#T	MDI UNIT	1
3	A02B-0338-C243	Oi-F MACHINE OPERATOR PANEL	1
4	A02B-0236-C239	MACHINE OPERATOR'S PANEL – SUB PANEL CCI	
5	A56L-0001-0134#2A2B	E-STOP SWITCH	

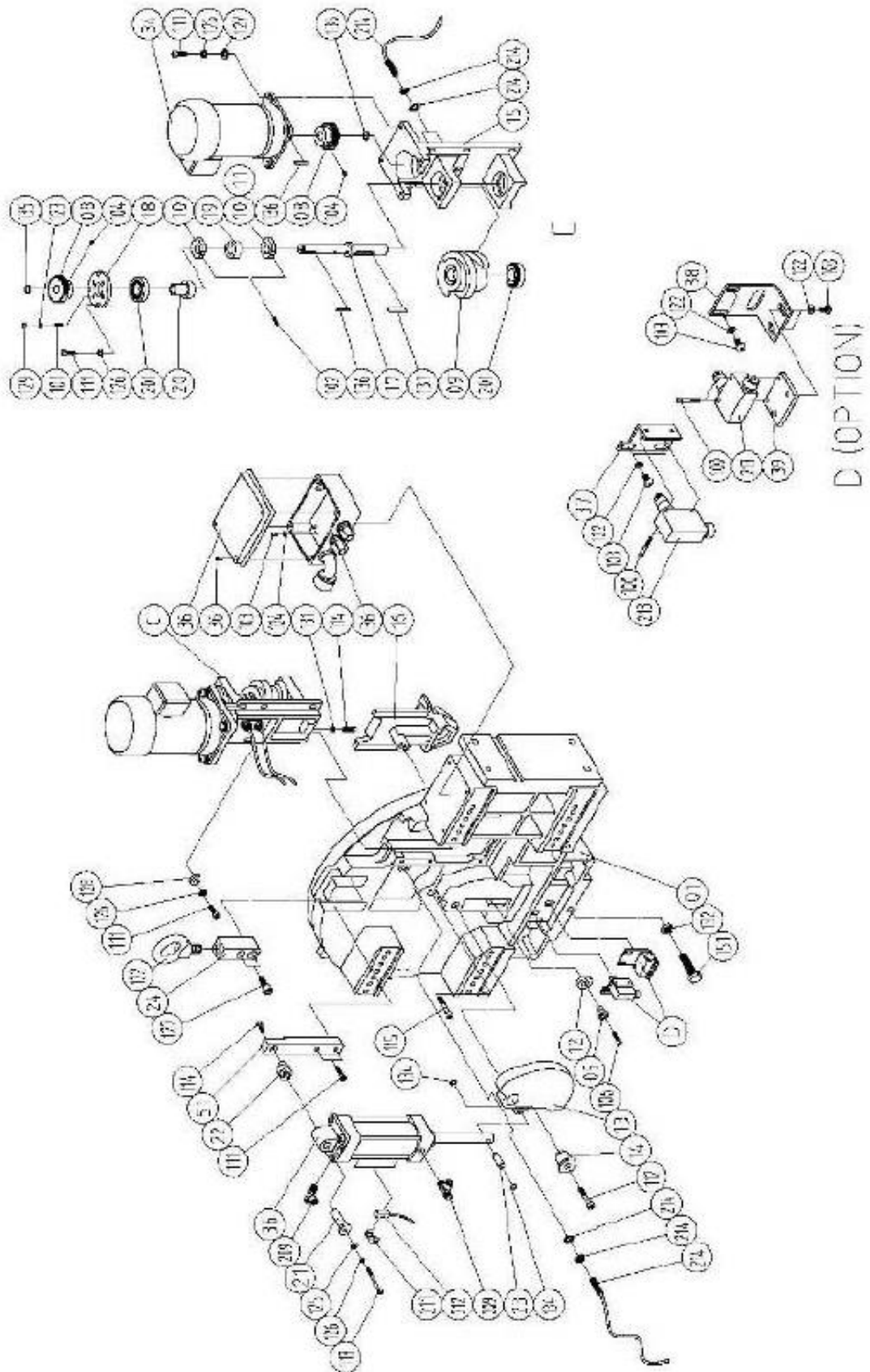
6.3 ELECTRIC ARM TYPE ATC DRAWING - 1



6.3 ELECTRIC ARM TYPE ATC DRAWING - 2



6.3 ELECTRIC ARM TYPE ATC DRAWING - 3



6.3 ELECTRIC ARM TYPE ATC - PARTS LIST

No.	Part No.	Part Name	Material / Spec.	QTY	Remark
01	MBX420200	New case	FC-25	1	24T
02	MBX420080	24T Disk plate	FC-25	1	
03	MBX410010	Disk rotate shaft	S45C	1	
04	MBX410030	Fixed cover of rotate shaft	S45C	1	
05	MBX410070	Sleeve of rocker arm	S45C	1	
06	MBX410090	Lock plate right slide seat	S45C	1	
07	MBX410100	Fixed plate of left slide seat	S45C	1	
08	MBX410150	Gear	S45C	2	
09	MBX410220	24 divide up turntable of cam	SCM435	1	
10	MBX410250	Single reaction block (On)	Powder metallurgy	1	
11	MBX411000	Single reaction block (Off)	Powder metallurgy	1	OPTION
12	MBX410290	Rotor of tool upside down	SC45	1	
13	MBX410740	A rocker arm of tool upside down	FCD55	1	
14	MBX410750	A rocker arm's arbor	S45C	1	
15	MBX410760	A cam seat	FCD50	1	
16	MBX410770	24T Tool upside down paw	FCD55	1	
17	MBX410780	An axle center of cam	S45C	1	
18	MBX410790	Bearing cover	S45C	1	
19	MBX410800	Collar	S45C	1	
20	MBX410810	Sleeve of bearing	S45C	1	
21	MBX410850	Fixed shaft of cylinder	S45C	1	
22	MBX410870	Eccentric shaft of cylinder	S45C	1	
23	MBX410880	Connect shaft of piston rod	S45C	1	
24	MBX411010	Fixed block of flying rings	S45C	1	
25	MBX450630	Interface board	AL-6061-T6	4	Ref (DEX65°× 530 L)
26	MBX460010	Tool pot (60°)	POM	24	
27	MBX460020	Rotate shaft of tool pot	S45C	24	
28	MBX460030	Lock shaft of tool pot	S45C	24	
29	MBX460040	Pull block of tool pot	Powder metallurgy	24	
30	MBX460240	Fixed block of pull stud	POM	24	
31	MBX460180	Spring	Piano wire	96	
32	MCX410230	Orientation seat of left pot	SPHC	1	
33	MCX410240	Orientation seat of right pot	SPHC	1	
34	MBX480140	Decelerator of gear motor	Hardware	1	
35	MBX480150	Cylinder of tool pot up & down	Hardware	1	
36	MBX480190	Wiring connect box	Hardware	1	
37	MBX411200	Limit switch fixed seat 1	SPHC	1	
38	MBX411210	Limit switch fixed seat 2	SPHC	1	
39	MBX411220	Limit switch fixed seat 3	SPHC	1	
40	MBX470130	Arm-530L	FCD-50	1	
41	MBX470340	Fixed plate	SPHC	2	
42	MBX470420	Slide block of stop tip	S45C	2	
43	MBX470460	Sleeve of stop tip	S45C	2	
44	MBX470480	Slide & fixed block	S45C	2	
45	MBX470490	Lock key	SS41	2	

6.3 ELECTRIC ARM TYPE ATC - PARTS LIST CONTINUED

46	MBX410280	φ8 Stop tip	S45C	2	
47	MBX470690	Fixed collar	S45C	1	
48	MBX470720	Stop tip	SCM415	2	
49	MBX470740	Spring φ1.2×9od×14T×41L	Piano wire	2	For stop tip
50	MBX470750	Spring φ1.2×11od×20T×78.5L	Piano wire	2	For Slide block of stop tip
51	MBX410860	Cylinder fixed block	S45C	1	
100		Hexagonal bolt	M4×0.7P-25L	4	For limit switch
101		Stop bolt	M5×0.8P-20L	4	
102		Stop bolt	M5×0.8P-25L	2	
103		Hex. socket head screw	M5×0.8P-12L	4	Limit switch (OP)*10 PCS
104		Stop bolt	M6×1P-8L	6	
105		Hexagonal bolt	M6×1P-20L	10	
106		Hexagonal bolt	M6×1P-25L	1	
107		Hexagonal bolt	M6×1P-40L	24	Compose with 20T Disk*20PCS
108		External Hexagonal bolt	M6×1P-20L	1	Origin point reaction
109		Hexagonal bolt	M8×1.25P-16L	4	
110		Hexagonal bolt	M8×1.25P-20L	1	
111		Hexagonal bolt	M8×1.25P-25L	14	
112		Hexagonal bolt	M8×1.25P-45L	1	
113		Hexagonal bolt	M8×1.25P-65L	1	
114		External Hexagonal bolt	M8×1.25P-30L	1	
115		Hexagonal bolt	M10×1.5P-65L	1	
116		Hexagonal bolt	M12×1.75P-20L	1	
117		Stop bolt	M6×1P-6L	2	For arm
118		Shallow head screw	M6X1P-10L	14	For arm
119		Hexagonal bolt	M6×1P-16L	6	For arm
120		Hexagonal bolt	M8×1.25P-55L	4	For arm
121		Self-tap screw	3/16 × 1"	96	
122		An eye ring	M16	1	
123		Spring washer	M5	4	
124		Flat washer	M5	4	
125		Spring washer	M6	34	Compose with 20T
126		Spring washer	M8	20	
127		Flat washer	M8 × 2T	14	
128		Flat washer	M8 × 5T	6	
129		Nut	M5 × 0.8P	4	
130		Nut	M6 × 1P	2	
131		Nut	M8 × 1.25P	1	
132		Nut	M16 × 1.5P	1	
133					
134		C Ring (External)	S-10	50	Compose with 20T Disk* 42 PCS
135		C Ring (External)	S-18	2	
136		Single side round key	5 × 5 × 28L	2	
137		Double side round key	8 × 7 × 40L	1	
201	GKW030205	Angular ball bearing	30205JR(HIC)	2	
202	GKW006008	Deep groove ball bearing	6008 ZZ	2	
203	GKWCF0010	Bearing for cam (With M10 nut)	CF-10	24	20T- 20 PCS

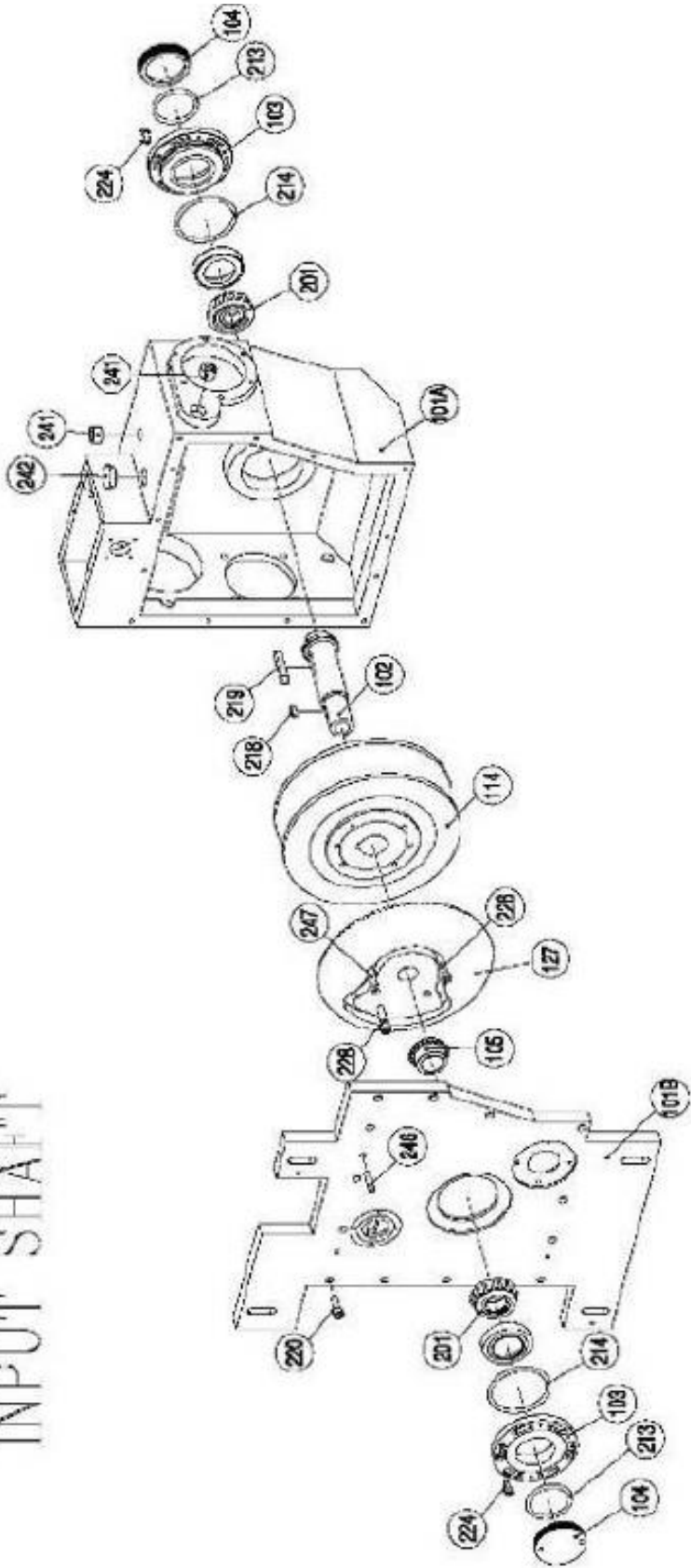
6.3 ELECTRIC ARM TYPE ATC - PARTS LIST CONTINUED

204					
205	MBX460180	Spring	ψ1.2×7.8od×10T×25L	96	20T- 80 PCS
206					
207		Steel ball	ψ8	96	
208					
209	EDWN00001	Air throttle	1/4 × ϕ 8	2	
210	FEWN10002	Oil filler joint	1/8 PT	2	
211	MBX480450	Sensor fixed jig	PM-10	2	
212	EAWC00001	Magnetism reed switch	LS-BD2	2	
213	EAWA00001	Micro limit switch	YAMATAKA SL1-A	2	
214	EAWB00001	Proximity switch	BALLUFF-PSC40B	3	Sensor+Nut+Washer
215	GLW040045	Taper cone Collar	40 × 45	2	

6.3 ELECTRIC ARM TYPE ATC - INPUT SHAFT DRAWING

No. / Parts No.	Specification	Qty	Parts No.	Parts No.	Specification	Qty
101A	A40205C00001	1	219	807524/20	Double drive lens 240/20	1
101B	A40205C00001	1	219	807524/20	Double drive lens 240/20	1
102	A40205C00001	1	224	811-345*101	Double tongue screw 240/20	1
103	A40205C00001	2	225	811-345*20L	Double tongue screw 240/20	2
104	A40205C00001	2	227	811-345*25L	Double tongue screw 240/20	2
105	A40205C00001	1	225	811-345*20L	Double tongue screw 240/20	1
11	A40205C00001	1	241	PTL/2	O.C. plugger PTL/2	1
127	A40205C00001	1	242	CL-25	O.C. plugger (Redline)	1
20	11P00008	2	248	PTB-7-0430L	Taper pin 40x30(L:10)	2
213	0-55-2	2	249	PTB-P-0430L	Resistor pin 40x30	2
214	076	2				

INPUT SHAFT



6.3 ELECTRIC ARM TYPE ATC - OUTPUT PART & MOTOR PART DRAWING

OUTPUT PARTS

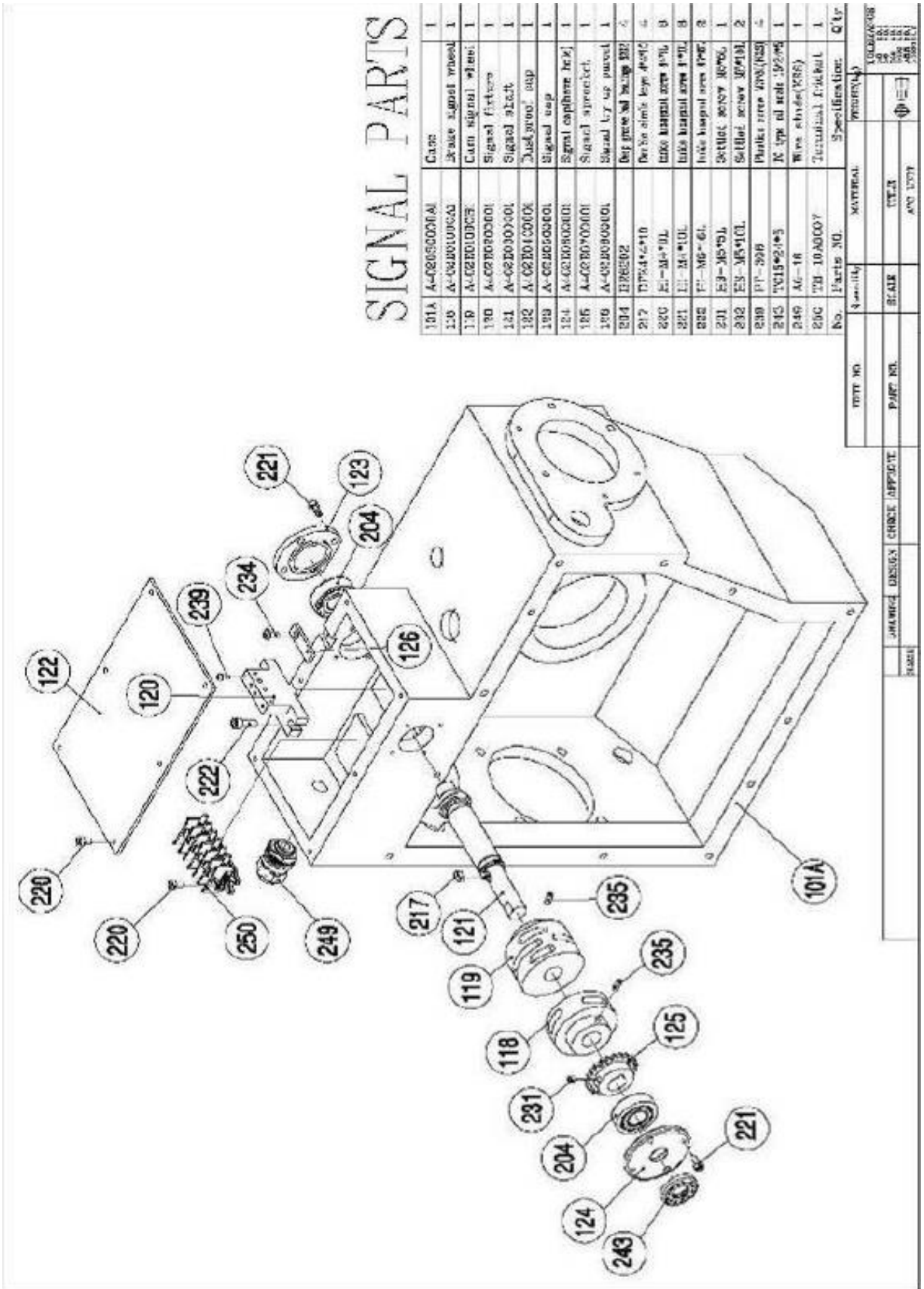
No.	Parts No.	Specification	Qty
104	A402800000A	Case	1
105	A40280100001	Spline (output) shaft	1
107	A40280200001	Output wheel	1
108	A40280300001	Sealing tube	1
109	A40280400001	Bearing tube fixture	1
110	A40280500001	Bearing tube gasket	1
111	A40280600001	Front oil cap	1
112	A40280700001	Back oil cap	1
131	R30020000A	Bearing OSS	8
202	F3022011	Input roller bearing RP	2
205	A40280800001	Sun's nut AN08	1
206	A40280900001	Sun's nut AN11	1
210	A40281000001	Sun's gasket AN08	1
211	A40281100001	Sun's gasket AN11	1
215	G300	O ring OHC	1
216	G100	O ring CHC	1
224	E1-303-16L	Ball bearing type (R7)	4
225	E1-303-19L	Ball bearing type (R7)	6
226	E1-303-16L	Ball bearing type (R7)	6
233	F3-100-101	Roller spring (R7) 20	8
240	PT-1/2"	Oil plugger P1/2"	1
244	C0E-E0-0040	Oil type 2L each 20000	1

MOTOR PARTS

109	A4028000001	Back umbrella gear	1
129	A4028000001	Motor fixture	2
130	A4028000001	Adjustment sheet	1
202	A402800001	Input roller bearing RP	2
205	A402800001	Sun's nut AN08	1
210	A402800001	Sun's gasket AN08	1
224	E1-303-16L	Ball bearing type (R7)	4
225	E1-303-19L	Ball bearing type (R7)	6
233	F3-100-101	Roller spring (R7) 20	8
240	PT-1/2"	Oil plugger P1/2"	1
No.	Parts No.	Specification	Qty

UNIT NO.	Quantity	MATERIAL	REMARK
PART NO.	SCALE	TYPE	DATE
DESIGNER	CHECKER	APPROVE	
DATE			

6.3 ELECTRIC ARM TYPE ATC - SIGNAL PARTS DRAWING



6.3 ELECTRIC ARM TYPE ATC – ROCKER PARTS & IDLER SPROCKET DRAWING

IDLER SPROCKET

No.	Part No.	Specification	Qty
191	A-00200-00000	Idler shaft	1
192	A-00200-00001	Idler sprocket	1
193	A-00200-00002	Idler outside cap	1
235	EO 3470L	Ball screw 32*21 -4	1
236	SC-M10	Hexagonal screw M10	1
234	NS-M10	Conical nut	1
235	CS	Shaft nut	1

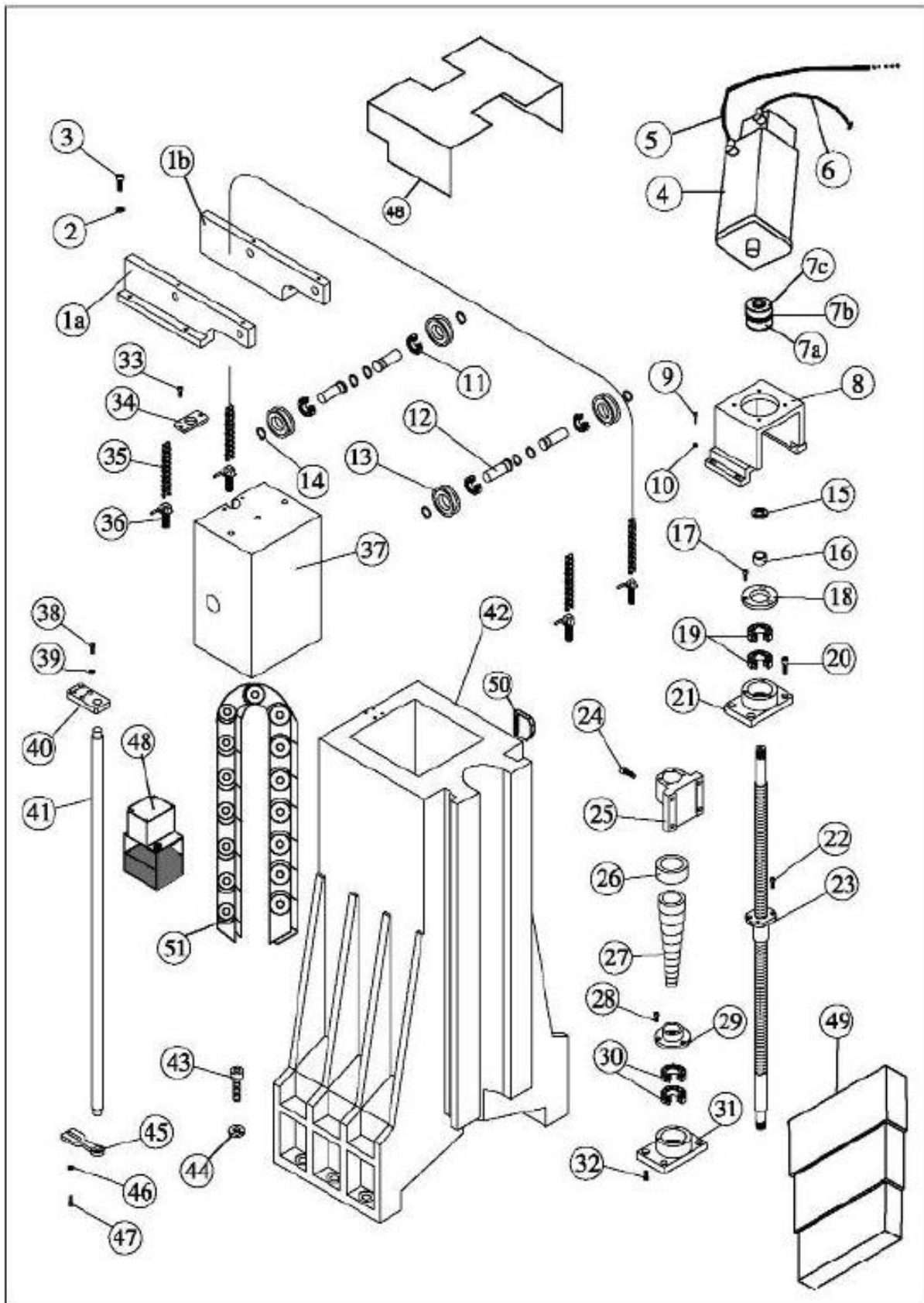
ROCKER PART

No.	Part No.	Specification	Qty
1013	A-00200-00000	Case cap	1
116	A-00200-00001	Rocker	1
116	A-00200-00002	Rocker shaft	1
117	A-00200-00003	Rocker shaft packing w/	1
135	SR0002200A	Rolling ball	1
136	R30008-00002	Rolling ball	1
205	L100010	Rolling ball	0
206	A30100	Rolling ball	2
207	A31000	Rolling ball	1
212	CS	O ring	2
222	SI-003-14L	Rolling ball	1
224	SI-003-14L	Rolling ball	1
200	M-M10	Rolling ball	1
217	SC-M10	Hexagonal	1

LOTT NO.	QUANTITY	MATERIAL	PROJECT NO.

NAME	DESIGN	CHECK	AFFECT
		SCALE	REV. 2

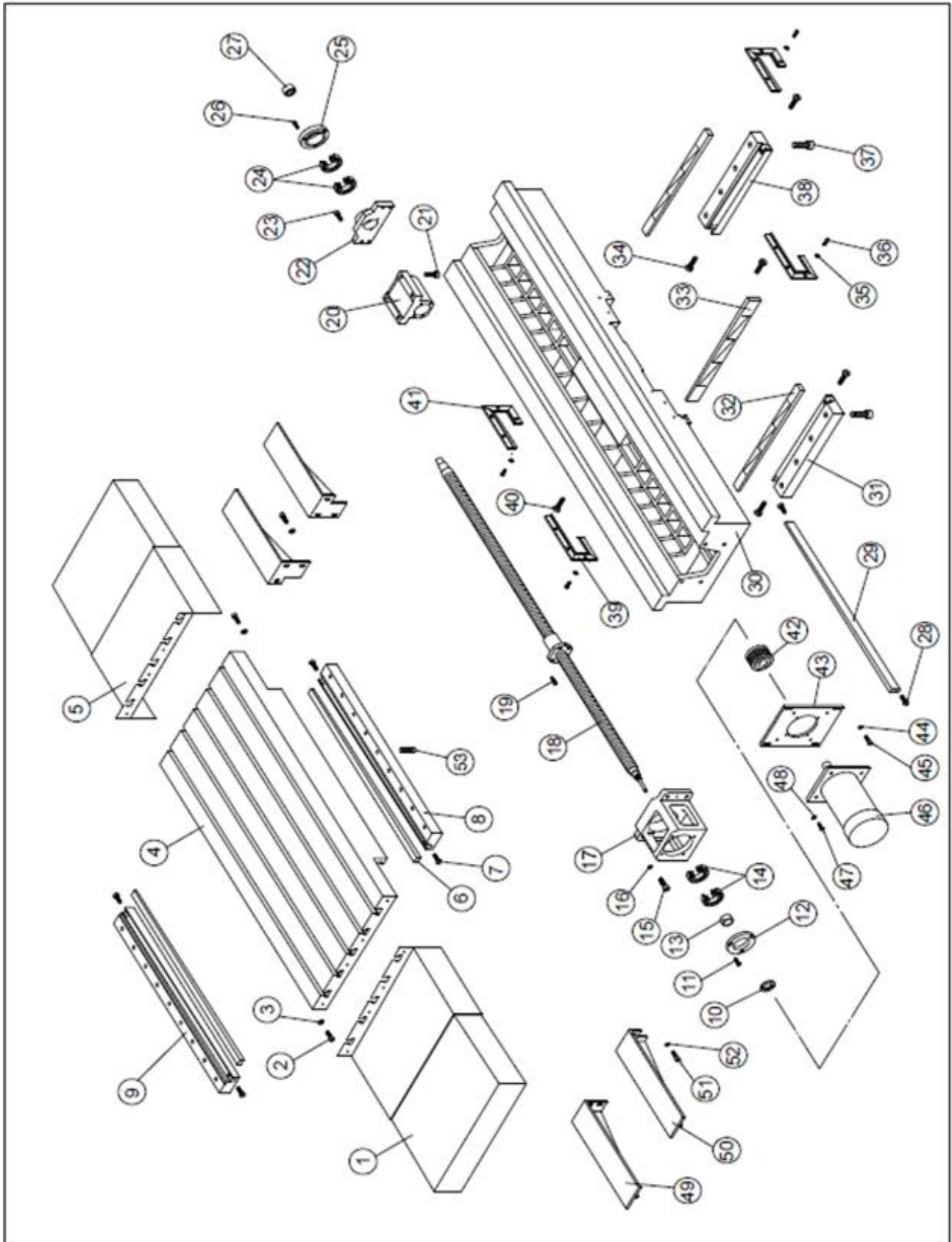
6.4 MC-B Z-AXIS ASSEMBLY COLUMN DRAWING



6.4 MC-B Z-AXIS ASSEMBLY COLUMN – PARTS LIST

ITEM	Part No.	Description	Qty
1a		Casting Chain Support Left MC 40	1
1a		Casting Chain Support Left MC 60	1
1b		Casting Chain Support Right MC 40	1
1b		Casting Chain Support Right MC 60	1
2		Washer	4
3		Screw	4
4		Motor Z Axis, Siemens	1
4	MTR-3156	Motor Z Axis, Anilam AM1160EB w/brake MC 40	1
4	MTR-3434	Motor Z Axis, Anilam AM1550CB w/brake MC 60	1
4	MTR-3826	Motor Z Axis, FANUC 0i BiS 12/3000 w/brake MC 40/60	1
5		Encoder Cable Siemens Axis Motor	
5	MSE-5310	Encoder Cable Anilam 6000 Axis Motor	1
5	MSE-6210	Encoder Cable FANUC 0i Z Axis Motor	1
6		Power Cable Siemens Axis Motor	
6	MSE-1980	Power Cable ANILAM 6000 Axis Motor MC 40/50	1
6	MSE-6212	Power Cable FANUC 0i Axis Motor	1
7a		Coupling Half Ballscrew X-Y-Z Axis MC 40/60	1
7b	BEN-2610	Coupling Spider	1
7c		Coupling Half Siemens Motor X-Y-Z Axis	
7c		Coupling Half Anilam Motor X-Y-Z Axis MC 40	1
7c		Coupling Half Anilam Motor X-Y-Z Axis MC 60	1
7c		Coupling Half Fanuc Motor X-Y-Z Axis MC 40/60	1
8		Plate Motor Siemens Z Axis	
8		Plate Motor Anilam Z Axis MC 40	1
8		Plate Motor Anilam Z Axis MC 60	1
8		Plate Motor Fanuc Z Axis MC 40/60	1
9		Screw	4
10		Washer	4
11	BEN-1225	Bearing Chain Support	4
12		Shaft Chain Bearing Support	4
13		Pulley Chain Guide	4
14		Snap Ring	8
15		Nut Ballscrew Bearing X-Y-Z Axis MC 40/60	1
16	BEN-4132	Spacer Z Axis Ballscrew MC 40/60	1
17		Screw	3
18	BEN-4134	Clamp Race Outer Bearing X-Y-Z Axis MC 40/60	1
19	BEN-1220	Thrust Bearing X, Y Z Ballscrew MC 40/60	2

6.5 MC-B X-AXIS ASSEMBLY TABLE DRAWING



6.5 MC-B X-AXIS ASSEMBLY TABLE - PARTS LIST

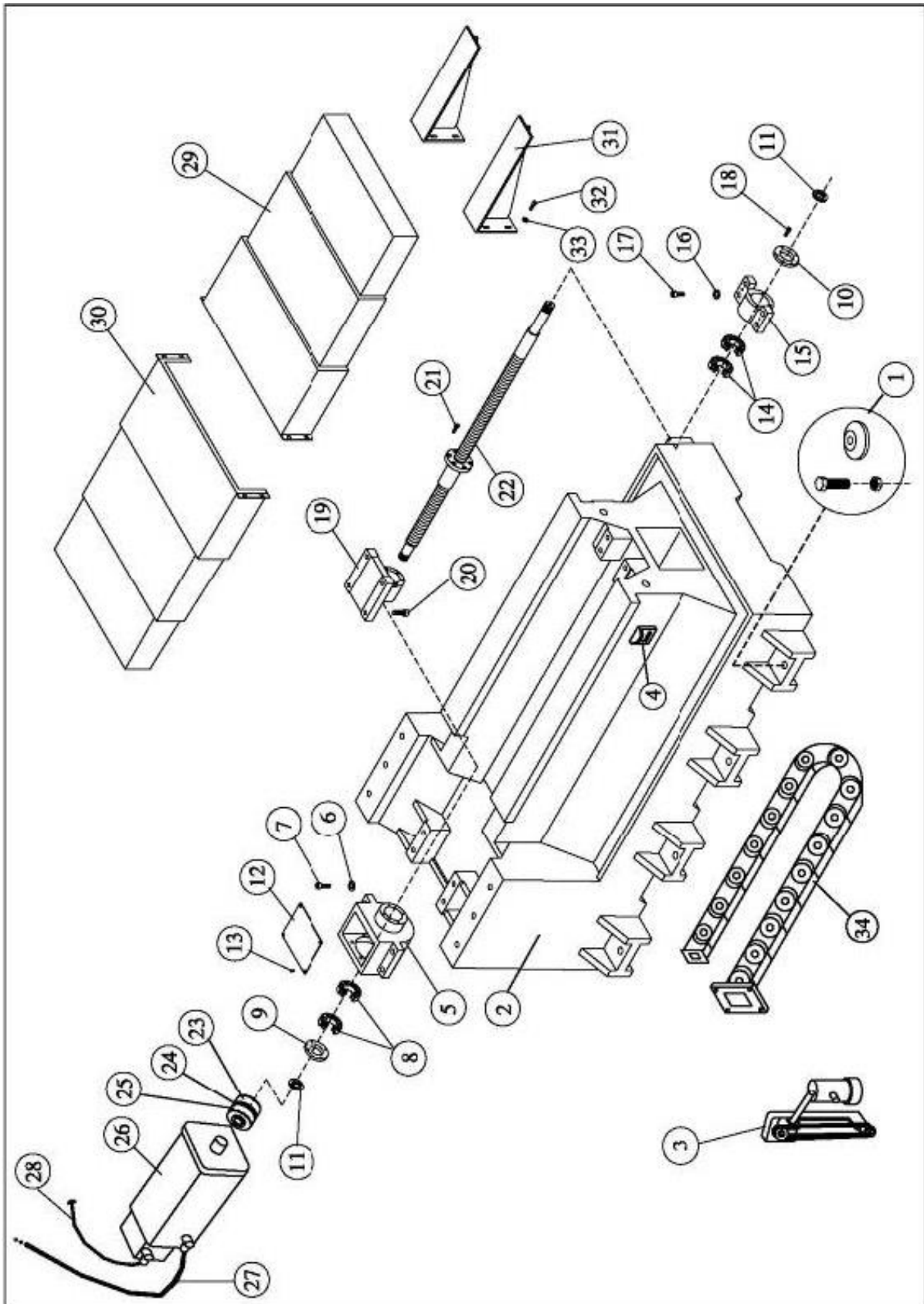
X-AXIS TABLE

ITEM	Part No.	Description	Qty
1	BEN-1156	WayCover Right/Left X Axis MC30	SET
1		WayCover Right/Left X Axis MC45	SET
1	BEN-1162	WayCover Right/Left X Axis MC60	SET
2		Screw	8
3		Washer	8
4		Table	1
6		Gib Front/Rear Lower X Axis MC 40	2
6		Gib Left/Right Front/Rear Lower X Axis MC 60	4
7	BEN-4000	Gib Screw	12
8		Gib Block Front Lower X Axis MC 40	1
8		Gib Block Left Front/Right Rear Lower X Axis MC 60	2
9		Gib Block Rear Lower X Axis MC 40	1
9		Gib Block Right Front/Left Rear Lower X Axis MC 60	2
10		Nut Ballscrew Bearing X-Y-Z Axis MC 40/60	1
11		Screw	3
12	BEN-4134	Clamp Race Outer Bearing X-Y-Z Axis MC 40/60	2
13		Spacer	1
14	BEN-1220	Bearing Thrust Front Ballscrew X-Y-Z Axis MC 40/60	2
15		Screw	4
16		Washer	4
17		Housing Motor X Axis	1
18	BEN-4106	X-Axis Ballscrew MC 30	1
18	BEN-4112	X-Axis Ballscrew MC 45	1
18	BEN-4120	X-Axis Ballscrew MC 60	1
19		Screw	5
20		Yoke X Axis MC 30	1
20		Yoke X Axis MC 45	1
20	BEN-4124	Yoke X Axis MC 60	1
21		Screw	4
22		Housing Bearing X Axis MC 40/60	1
23		Screw	4
24	BEN-1220	Bearing Radial Rear Ballscrew X-Y-Z Axis MC 40/60	2
25		Cover Bearing MC 40/60	1
26		Screw	3
27		Gib Side X Axis MC 40	1
27		Gib Left/Right Side X Axis MC 60	2
28		Saddle	1
29		Gib Block Left Lower Y Axis MC 40/60	1

6.5 MC-B X-AXIS ASSEMBLY TABLE – PARTS LIST (CONTINUED)

30		Gib Lower Y Axis	2
31		Gib Side Y Axis MC 40/60	1
32		Washer	12
33		Screw	12
34		Gib Block Right Lower Y Axis MC 40/60	1
35		Screw	2
36		Y Axis Wiper MC 40	4
36		Y Axis Wiper MC 60	4
37		X Axis Wiper MC 40	4
37		X Axis Wiper MC 60	4
38		Coupling Half Ballscrew X-Y-Z Axis MC 40/60	1
39	BEN-2610	Coupling Spider	1
40		Coupling Half Motor Siemens X-Y-Z Axis	1
40		Coupling Half Motor Anilam X-Y-Z Axis MC 40	1
40		Coupling Half Motor Anilam X-Y-Z Axis MC 60	1
40		Coupling Half Motor Fanuc X-Y-Z Axis MC 40/60	1
41		Plate Motor Siemens X Axis MC	1
41		Plate Motor Anilam X Axis MC 40	1
41		Plate Motor Anilam X Axis MC 60	1
41		Plate Motor Fanuc X Axis MC 40/60	1
42		Washer	4
43		Screw	4
44		Motor X/Y Axis, Siemens	1
44	MTR-3154	Motor X/Y Axis , Anilam AM1160E MC 40	1
44	MTR-3432	Motor X/Y Axis , Anilam AM1550C MC 60	1
44		Motor X/Y Axis, FANUC 0i BiS 12/3000 MC 40/60	1
45		Encoder Cable Siemens Axis Motor	1
45	MSE-5310	Encoder Cable Anilam 6000 Axis Motor	1
45		Encoder Cable FANUC 0i X-Y Axis Motor	1
46		Power Cable Siemens Axis Motor	1
46		Power Cable ANILAM 6000 Axis Motor MC 60/100	1
46		Power Cable FANUC 0i Axis Motor	1
47		Bracket Left/Front, Right/Rear X Axis	2
48		Bracket Left/Rear, Right/Front X Axis	2
49		Screw	12
50		Washer	12
51		Screw	18
52	SWT-5014	Home Switch	1
53		Dog Home Switch X Axis	1

6.6 MC-B Y-AXIS BASE ASSEMBLY DRAWING



6.6 MC-B Y-AXIS BASE ASSEMBLY – PARTS LIST

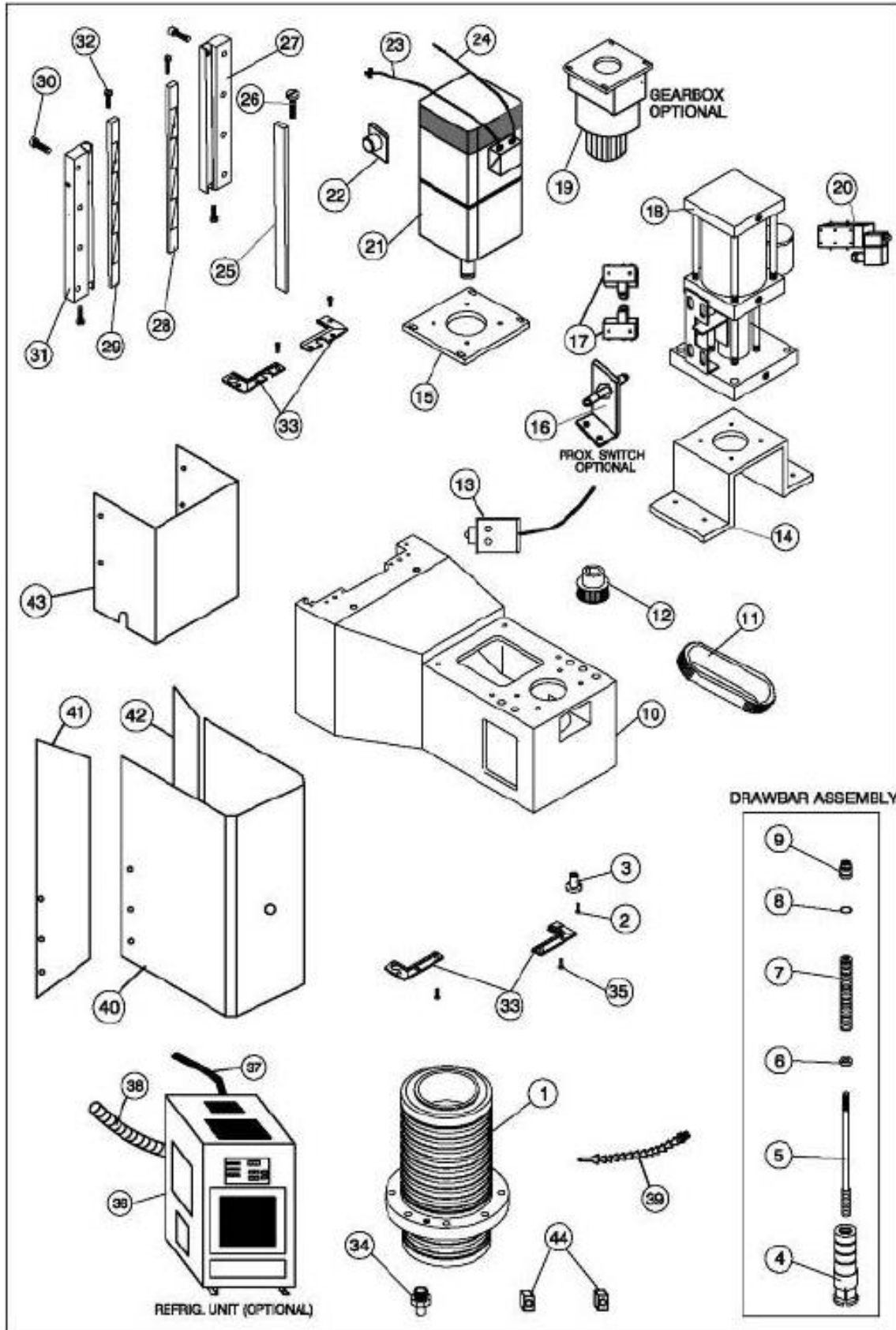
Y-AXIS BASE

ITEM	Part No.	Description	Qty
1	BEN-1005	Leveling Pads and Bolts MC 40/60	SET(8)
2		Base Casting	1
3	MSE-3200	Oil Skimmer (Optional)	1
4		Dog Home Switch X-Y Axis all	1
5		Housing Motor & Thrust Bearing Y Axis	1
6		Washer	4
7		Screw	4
8	BEN-1220	Bearing Thrust Rear Ballscrew X-Y-Z Axis MC 40/60	2
9	BEN-4134	Clamp Race Outer Bearing X-Y-Z Axis MC 40/60	1
10		Cover Bearing MC 40/60	1
11		Nut Ballscrew Bearing X-Y-Z Axis MC 40/60	2
12	BEN-4128	Cover Motor & Thrust Bearing Housing Y Axis	1
13		Screw	4
14	BEN-1220	Bearing Radial Front Ballscrew X-Y-Z Axis MC 40/60	2
15		Housing Bearing Y Axis MC 40/60	1
16		Washer	4
17		Screw	4
18		Screw	4
19		Yoke Y Axis MC 40	1
19	BEN-4126	Yoke Y Axis MC 60	1
20		Screw	4
21		Screw	6
22	BEN-4104	Ballscrew Y Axis MC 40	1
22	BEN-4114	Ballscrew Y Axis MC 60	1
23		Coupling Half Ballscrew X-Y-Z Axis MC 40/60	1
24	BEN-2610	Coupling Spider	1
25		Coupling Half Motor Siemens	1
25		Coupling Half Motor Anilam X-Y-Z Axis MC 40	1
25		Coupling Half Motor Anilam X-Y-Z Axis MC 60	1
25		Coupling Half Motor Fanuc X-Y-Z Axis MC 40/60	1
26		Motor X/Y Axis, Siemens	1
26	MTR-3154	Motor X/Y Axis , Anilam AM1160E MC 40	1
26	MTR-3432	Motor X/Y Axis , Anilam AM1550C MC 60	1
26		Motor X/Y Axis, FANUC 0i BiS 12/3000 MC 40/60	1
27		Power Cable Siemens Axis Motor	1
27	ASY-6086	Power Cable ANILAM 6000 Axis Motor MC 60/100	1
27		Power Cable FANUC 0i Axis Motor	1
28		Encoder Cable Siemens Axis Motor	1
28	MSE-5310	Encoder Cable Anilam 6000 Axis Motor	1

6.6 MC-B Y-AXIS BASE ASSEMBLY – PARTS LIST (CONTINUED)

28		Encoder Cable FANUC 0i X-Y Axis Motor	1
29	BEN-1155	Waycover Y-Axis Front MC 40	1
29	BEN-1252	Waycover Y-Axis Front MC 60	1
30	BEN-1150	Waycover Y-Axis Rear MC 40	1
30	BEN-1178	Waycover Y-Axis Rear MC 60	1
31		Bracket Y-Axis Waycover MC 40	2
31		Bracket Y-Axis Waycover MC 60	2
32		Washer	6
33		Screw	6
34		Track Y Axis MC 40	1
34		Track Y Axis MC 60	1

6.7 MC-B HEAD ASSEMBLY DRAWING



6.7 MC-B HEAD ASSEMBLY – PARTS LIST

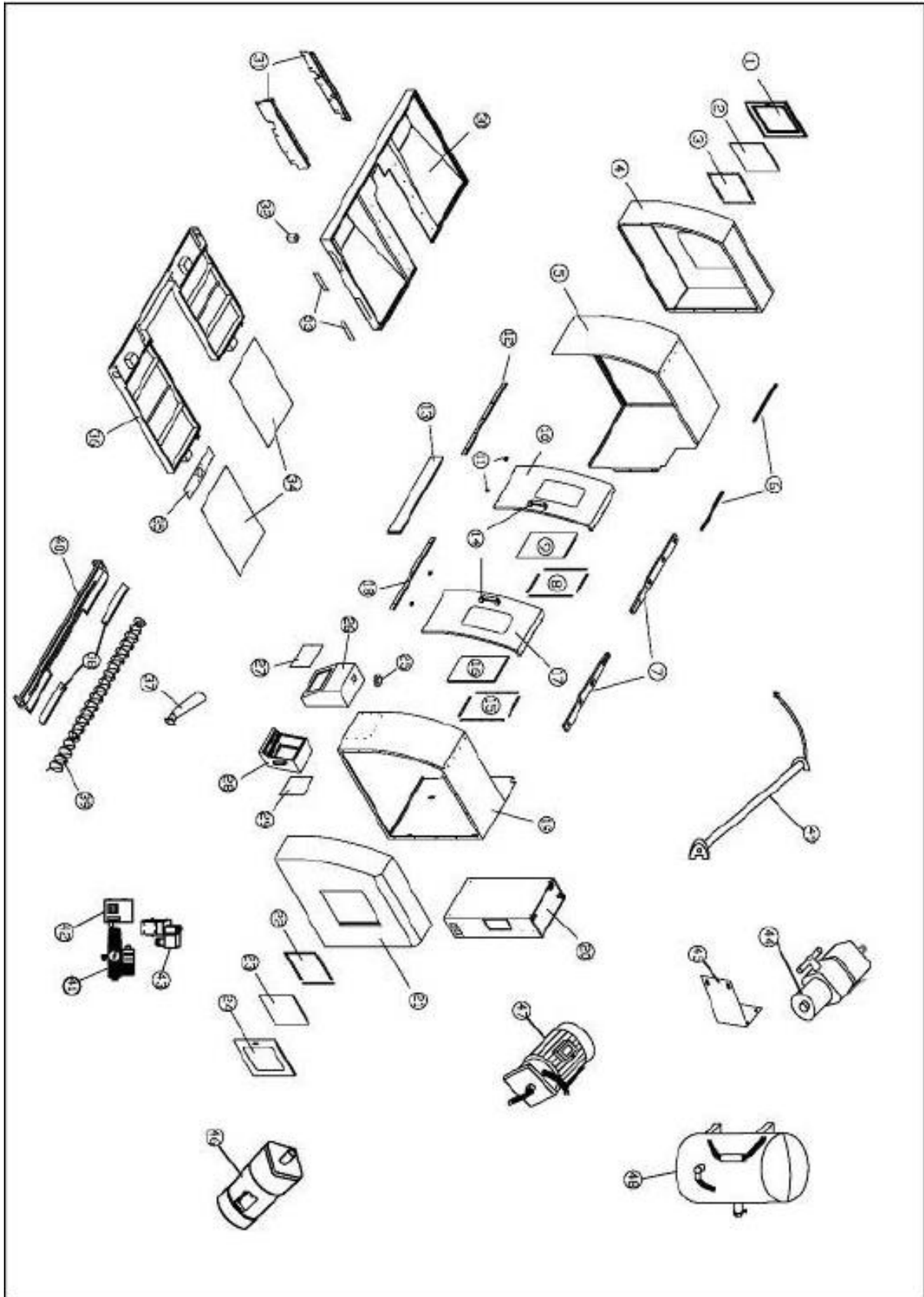
MC SERIES HEAD ASSEMBLY

ITEM	Part No.	Description	Qty
1	BEN-1110	Spindle Cartridge 40 Taper 6,000 RPM	1
1	BEN-1112	Spindle Cartridge 40 Taper 8,000 RPM	1
1	BEN-1115	Spindle Cartridge 40 Taper 10,000 RPM	1
1	BEN-1116	Spindle Cartridge 40 Taper 12,000 RPM	1
1	BEN-1118	Spindle Cartridge 50 Taper 6,000 RPM	1
2		Screw	3
3		Coolant Fitting	3
4	BEN-1140	Drawbar Retention Finger MC (A) CAT 40	1
4	BEN-1314	Drawbar Retention Finger MC (B) CAT 40	1
5	DBR-2072	Drawbar Shaft	1
6		Drawbar Collar Lower Shaft	1
7	DBR-2080	Drawbar Belleville Washer - Must Purchase With 7A Below	126
7A	DBR-2082	Drawbar Washer - Use with 7 Above	1
8	DBR-2076	Drawbar Collar Upper Shaft	1
9	DBR-2078	Drawbar Nut	1
10		Headstock	1
11	BEN-1080	Spindle Belt MC 60/100	1
12		Pulley Spindle Motor Siemens 25 HP	1
12		Pulley Spindle Motor Siemens 40 HP	1
12	MSM-4110	Pulley Spindle Motor Anilam 6000 20 HP	1
12	MSM-4110	Pulley Spindle Motor Anilam 6000 30 HP	1
12	MSM-4110	Pulley Spindle Motor Fanuc 0i 20 HP	1
12	MSM-4110	Pulley Spindle Motor Fanuc 0i 30 HP	1
13	SWT-5014	Home Switch	1
14	DBR-2084	Drawbar Actuator Mounting Bracket	1
15		Spindle Motor Plate	1
16	BEN-1340	Prox. Switch Spindle Orient 10000/12000 RPM Gearbox Option	1
17	SWT-5110	Drawbar Limit Switch	2
18	DBR-2070	Drawbar Actuator Complete Set	1
19		Gearbox 2 Speed for Siemens Spindle Motor	1
19	MSM-6510	Gearbox 2 Speed MC for Anilam 20 HP Spindle Motor	1
19	MSM-6514	Gearbox 2 Speed for Anilam 30 HP Spindle Motor	1
19	MSM-6512	Gearbox 2 Speed for Fanuc 20 HP Spindle Motor	1
20	BEN-1058	Solenoid Valve 110 Vac	1
21		Spindle Motor Siemens 25 HP	1
21		Spindle Motor Siemens 40 HP	1
21	MTR-3136	Spindle Motor Anilam SM075C, 20 HP	1

6.7 MC-B HEAD ASSEMBLY – PARTS LIST (CONTINUED)

21	MTR-3142	Spindle Motor Anilam SM120C, 30 HP	1
21	MTR-3870	Spindle Motor FANUC 0i Bi 8/8000, 20 HP	1
21	MTR-3872	Spindle Motor FANUC 0i Bi 12/7000, 30 HP	1
22	SWT-5300	PushButton Switch	1
23		Encoder Cable Siemens Spindle Motor	1
23	MSE-5310	Encoder Cable Anilam 6000 Spindle Motor	1
23	MSE-6210	Encoder Cable FANUC 0i Spindle Motor	1
24		Power Cable Siemens Spindle Motor	1
24		Power Cable Anilam 6000 Spindle Motor	1
24		Power Cable Fanuc 0i Spindle Motor	1
25		Gib Side Z Axis MC 40	1
25		Gib Side Z Axis MC 60	1
26	BEN-4000	Screw Gib	2
27		Backing Plate for Right Back Gib Z Axis MC 40	1
27		Backing Plate for Right Back Gib Z Axis MC 60	1
28		Gib Back Z Axis MC 40	2
28		Gib Back Z Axis MC 60	2
30		Screw	10
31		Backing Plate for Left Back Gib Z Axis MC 40	1
31		Backing Plate for Left Back Gib Z Axis MC 60	1
32		Screw	4
33	BEN-1370	Wiper Z Axis MC 40	SET(2)
33	BEN-1372	Wiper Z Axis MC 60	SET(2)
34	BEN-1090	Coolant Nozzle for Spindle MC - NNPT-1/4-15	SET(4)
34	BEN-1092	Coolant Nozzle for Spindle MC - NNM-10-15	SET(4)
35		Screw	12
36	BEN-2054	Chiller for 10,000, 12,000 RPM Spindle & Geared Head	1
37		1/4" hydraulic hose (Black) for Chiller/Gearbox	1
38		1 1/2" steel reinforced hose for Chiller/Gearbox	1
39	MSM-1284	LOC-LINE 1/4" Hose	2
39	MSM-1286	LOC-LINE NPT Connector	2
39	MSM-1288	LOC-LINE 1/8" Round Nozzle	2
40		Sheet Metal Front Head MC 40	1
40		Sheet Metal Head Front MC 60	1
41		Sheet Metal Head Left MC 40	1
41		Sheet Metal Head Left MC 60	1
42		Sheet Metal Head Right MC 40	1
42		Sheet Metal Head Right MC 60	1
43	BEN-1260	Waycover Upper Z Axis MC 40	1
43	BEN-1262	Waycover Upper Z Axis MC 60	1
44	BEN-1000	Spindle keys 40 Taper	SET(2)
44	BEN-1002	Spindle keys 50 Taper	SET(2)

6.8 MC-B SERIES SHEETMETAL ASSEMBLY DRAWING



6.8 MC-B SERIES SHEETMETAL ASSEMBLY – PARTS LIST

MC SERIES SHEET METAL

ITEM	Part No.	Description	Qty
1		Side Door Left MC 40	1
1		Side Door Left MC 60	1
2		Side Door Window Left MC 40	1
2		Side Door Window Left MC 60	1
3		Side Door Window Retainers Left MC 40	1 SET(4)
3		Side Door Window Retainers Left MC 60	1 SET(4)
4		Enclosure Left Side Extension MC 40	1
4		Enclosure Left Side Extension MC 60	1
5		Enclosure Left Side MC 40	1
5		Enclosure Left Side MC 60	1
6		Upper Door Track Mount MC 40	2
6		Upper Door Track Mount MC 60	2
7	BEN-2250	Upper Door Track MC 40	2
7	BEN-2252	Upper Door Track MC 60	2
8		Door Left Window Retainers MC 40	1 SET
8		Door Left Window Retainers MC 60	1 SET
9		Door Left Window MC 40	1
9		Door Left Window MC 60	1
10		Door Left MC 40	1
10	BEN-2264	Door Left MC 60	1
11		Door Roller	4
12		Door Left Rail MC 40	1
12		Door Left Rail MC 60	1
13		Enclosure Front 40	1
13		Enclosure Front 60	1
14		Handle Door	2
15		Door Right Window Retainers MC 40	1
15		Door Right Window Retainers MC 60	1
16		Door Right Window MC 40	1
16		Door Right Window MC 60	1
17		Door Right MC 40	1
17		Door Right MC 60	1
18		Door Left Rail MC 40	1
18		Door Left Rail MC 60	1
19		Enclosure Right Side MC 40	1
19		Enclosure Right Side MC 60	1
20		Electrical Cabinet MC 40/60	1

6.8 MC-B SERIES SHEETMETAL – PARTS LIST (CONTINUED)

21		Enclosure Right Side Extension MC 40	1
21		Enclosure Right Side Extension MC 60	1
22		Side Door Window Retainers Right MC 40	1 SET(4)
22		Side Door Window Retainers Right MC 60	1 SET(4)
23		Side Door Window Right MC 40	4
23		Side Door Window Right MC 60	4
24		Side Door Right MC 40	1
24		Side Door Right MC 60	1
25		Console Base Pivot	1
26		Console Base Cabinet	1
27		Console Base Access Cover	1
28		Console Cabinet	1
29		Console Access Panel	1
30		Enclosure Base MC 40	1
30		Enclosure Base MC 60	1
31		Base Frame Enclosure Supports MC 40	2
31		Base Frame Enclosure Supports MC 60	2
32	BEN-2270	Enclosure Support Foot	4
33		Enclosure Base Side Cover MC 40	2
33		Enclosure Base Side Cover MC 60	2
34		Coolant Tank Cover MC 40	2
34		Coolant Tank Cover MC 60	2
35		Coolant Motor Plate	1
36		Coolant Tank	1
37		Auger Shoot	1
38		Rubber Anti-Splash Guards	2
39		Chip Auger Screw MC-45	1
39	BEN-1710	Chip Auger Screw MC-60	
40		Chip Auger Trough	1
41	MSM-2884	Air Filter Lubricator Regulator, 125 psi.	1
42	SWT-5120	Low Air Pressure Switch	1
43	BEN-1024	Solenoid Valve Airblast 110 Vac MC	1
44	MSE-2604	Washdown Pump 3/4 HP MC	1
45		Washdown Pump Bracket	1
46	BEN-1120	Chip Auger Motor 1/2 HP MC	1
47	BEN-1040	Flood Coolant Pump 1/2 HP MC	1
48		Pressure Reservoir for ATC	1
49	BEN-1050	Fluorescent Light for MC	2